



**BTD-20**

**TURF TOPPER**

**TOP DRESSER**



**MANUAL & PARTS ILLUSTRATION**

# TABLE OF CONTENTS

01 Turf Topper Cover Page
02 Table of Contents
03 Warranty
04 Operation Manual Cover Page
05 Safety Regulations
06 Safety Regulations
07 Short Description & Technical Data
08 Initial Operating & Operation
09 Spreading
10 Repair & Maintenance
11 Repair & Maintenance
12 Stretching the Drive Train
13 Oil Change & Axel Maintenance
14 Adjustment of Spreader Roll Spacing
15 Stretching the Conveyor Belt
16 Installing & Removing the Conveyor Belt
17 Stretching the Conveyor
18 Parts Manual Cover Page
19 Chassis Drawing
20 Chassis Parts List
21 Spreading Unit Drawing
22 Spreading Units Part List
23 Drive Parts Drawing
24 Drive Parts & PTO Shaft Parts List
25 PTO Shaft Drawing
26 PTO Shaft Parts List
27 Seven Hole Plug – Lighting Part
28 Topdresser Facts
29 Helpful Topdressing Hints

# Warranty

**Bannerman Ltd** warranties all **BTD-20-H** Top Dresser, when applied and installed, to be free from defects in material and workmanship under normal use and service for a period of 1 year from date of use. This warranty does not guarantee a particular service life of the products. Service life will vary with application, operating environment, level of maintenance and other factors beyond our control.

**Bannerman Ltd's** sole responsibilities for the **BTD-20-H** Top Dresser or parts determined to be defective and covered by this warranty is limited to repairing the product or part. \*\*An allowance is to be applied to the labour cost for the removal and replacement.\*\*

Prior authorization from **Bannerman Ltd** must be obtained before replacing or returning any part (s), or incurring any cost of labour. No charges for expense incurred in parts, labour or transportation by unauthorized persons will be allowed under this warranty. **Bannerman Ltd** reserves the right of any part or Bannerman assembly (with transportation prepaid) claimed to be covered under this warranty.

**Bannerman Ltd** shall not be liable, in event, for proximate, incidental, consequential, special or other damages. This includes, but it not limited to, damages for loss of production, loss of profit, loss of opportunity, or injury to persons arising out of any breach in this warranty.

**THERE ARE NO WARRANTIES, EXPRESSED OR IMPLIED, INCLUDING THE WARRANTY OF MERCHANTABILITY, WARRANTY OF FITNESS FOR PARTICULAR PURPOSE, OR ANY OTHER WARRANTY EXTENDING BEYOND THAT SET FORTH ABOVE.**

## **GORDON BANNERMAN LIMITED**

41 Kelfield Street, Rexdale, M9W 5A3  
Ontario, Canada

### **CONTACT US:**

**CAN 1-800-325-4871**

**USA 1-800-665-2696**

[info@sportsturfmagic.com](mailto:info@sportsturfmagic.com)

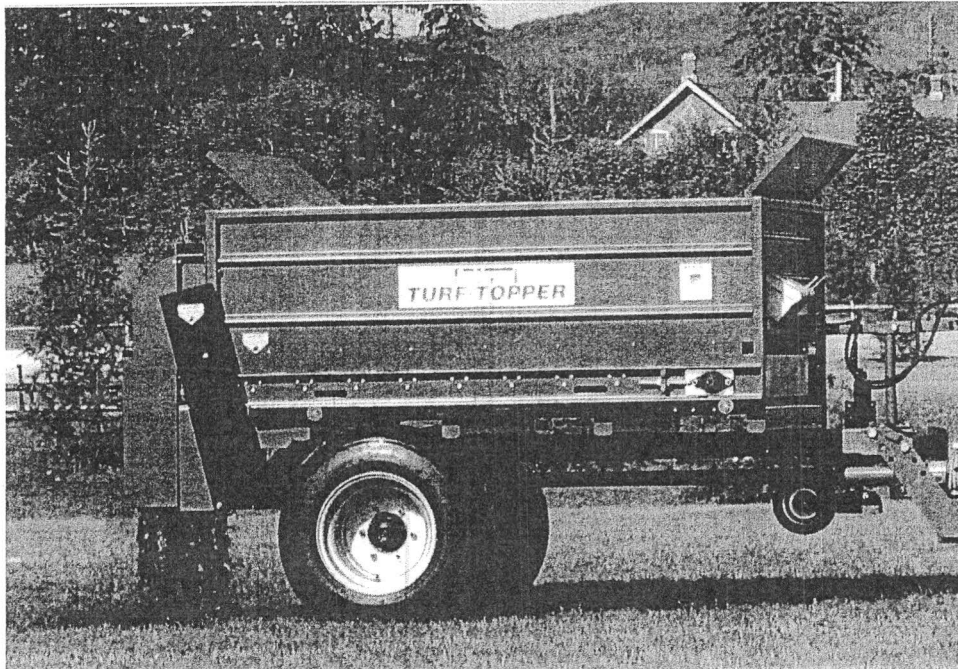
# **TURF TOPPER**

# **TOPDRESSER**

## **OPERATION**

## **MANUAL**



# Safety Regulations

1. The BTD-20 Turf Topper topdresser is solely for spreading small-grained and loose materials such as sand, small granular materials, soil mixtures, dry compost or similar products. Any other usage is not in accordance with the indicated use. The manufacturer does not answer for damage resulting from incorrect usage. The user alone has to incur the risk. Usage in accordance with the intended use includes compliance with the manufacturer's conditions of operation, maintenance and repair.
2. The BTD-20 Turf Topper is built according to prior art and is operationally reliable; however the BTD-20 Turf Topper could put life and limb of the operator or that of a third persons at risk if it is not used, maintained and repaired by persons who are familiar with it and have been informed of the dangers.
3. Any person who, in the plant of the user, is responsible for operation, maintenance and repair of the topdresser, must have read and understood the operating instructions and, in particular, this chapter, "Safety Regulations". Detach the topdresser from the towing vehicle during all maintenance and service work. Use only original spare parts from the manufacturer for repairs. Alongside the references in these operating instructions, the general regulations for safety and for prevention of accidents must be observed. When using the public roads, the corresponding provisions will be enforced. Accompanying persons are not allowed.
4. The BTD-20 Turf Topper may only be towed along public roads once it holds the necessary registration. Complete roadworthiness certificate, licensing permit and the additional safety facilities necessary for this (catchment loop, wheel chock, lighting) are obtainable on the request of the customer.
5. The operator is obliged to check the topdresser for any external damage or failure before putting it into operation. Any changes (including operating performance) which might affect safety must immediately be remedied. Changes to and rebuilding of the topdresser (other than changes allowed by the manufacturer) are, for reasons of safety, not allowed.
6. Before starting work, the operator must make himself familiar with all the fittings and controls as well as their functioning. The topdresser must be properly attached. Secure the topdresser when not in use, by means of the parking brake and/or wheel chocks to prevent the topdresser from rolling away; check the function of the parking brake regularly.
7. While the topdresser is in operation, no one is allowed to enter the loading ramp. A label with this notice is stuck on both sides of the topdresser. This notice must always be well legible and has to be replaced if damaged.

## **Safety Regulations**

8. During operation, no one is allowed to stay within the zone of danger, since rotating parts and foreign flying particles could cause bodily injury. Never operate without protective guards.
9. Adjusting and repair work on axle (brake, wheel, bearings and tires) must only be undertaken by properly trained and authorized personnel.
10. The power takeoff shaft may only be mounted and dismounted when the drive of the towing vehicle is shut off; see also operating instructions "power takeoff shaft".
11. The authorized supporting load on the towing vehicle should be noted.

## Short Description

The BTD-20 Turf Topper topdresser is appropriate for small-grained, loose materials such as sand, small granular materials, dry compost, soil mixtures, or similar products. The spreading equipment (conveyor belt and spreader drum) of the topdresser are driven by the towing vehicle's power take off shaft. Spreading density or spreading amount can be determined by the driving speed, the number of revolutions of the power take off shaft, and by adjusting the marked 10 position hydraulic regulator flow valve.

Techincal Data			
Dimensions	Length	13 Feet	3.80 Metres
	Width	5 Feet & 6 Inches	1.85 Metres
	Height	8 Feet	2.30 Metres
Weights	Authorized Total Weight	8140 Pounds	3700 Kilograms
	Authorized Axle Load	7040 Pounds	3200 Kilograms
	Authorized Supporting Load	1100 Pounds	500 Kilograms
	Empty Weight	2222 Pounds	1010 kilograms
Tire Equipment & Pressures	15.0/55-17 8PR	1.75 - 2.0 Bar	P.S.I.
	19.0/45-17 10PR	0.75-1.0 Bar	P.S.I.
Other Information	Wheel Width	1100 Millimetres	
	Ramp Size	1.45 x 2.10 Metres	
	Loading Capacity	1.9 Square Metres	3-4 Cubic Yards
	Speed Limit	25 K.P.H.	M.P.H.
	Towing capacity	18 kW (25PS)	18-20 H.P
	Maximum R.P.M of PTO Shaft	540	
	Spreading Amount	0.6-29.5 Millimetres	1/4 - 3 Inches

# Initial Operating

1. Screw plug-in shoe for the change lever brake at the towing vehicle on the appropriate part.
2. Should the topdresser be used on public roads, attached the license plate to the license plate holder on the left hand side at the rear of the topdresser, and install the light kit.
3. After the first ride with a full load
  - a) Tighten the wheel nuts.
  - b) Check the wheel hub clearance, hub clearance of the brake drum and have them adjusted, if necessary.
  - c) Check tire pressure.

# Operation

## Before Each Use

- 1) Check for any externally recognizable failures or damage and repair them.
- 2) Check tire pressure
- 3) Check lighting
- 4) Check conveyor belt alignment & tension, reset if necessary. Conveyor belt must not graze the sides.

## Coupling & Taking Off

1. When the topdresser has come to a stop, use the ratchet brake lever and secure the topdresser with the wheel chocks to prevent it from rolling away.
2. Attach the topdresser to the towing vehicle & apply the catchment loop around the coupling mouth of the towing vehicle.
3. Connect the PTO shaft.
4. Remove the ratchet brake lever plug on the drawbar and plug it into the plug-in shoe on the towing vehicle.
5. Plug the seven-hole plug into the towing vehicle.
6. Place the brake lever and electric cable in such a way that they do not drag on the ground or chafe on the towing chafe.
7. Screw up support tire lifting the safety flap.
8. Disengage ratchet brake lever from the towing vehicle.
9. Unhitching the topdresser is carried out in the reverse order.

## Loading

1. When loading, pay attention for the authorized total weight.
2. Check for the even loading.

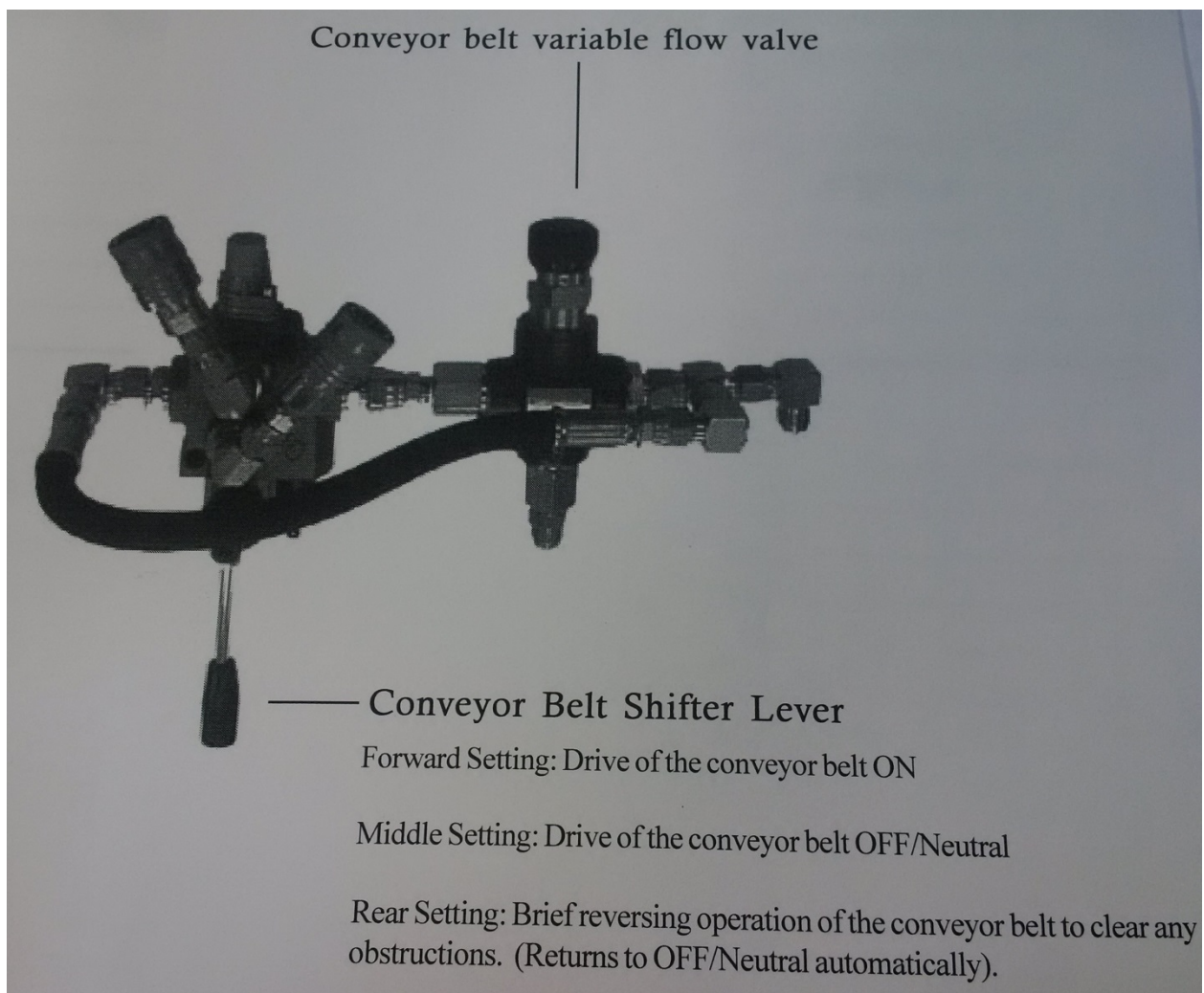


# Spreading

Select desired spreading amount Millimetres per Square Metres or Inches per Square Yard depending on:

- a) The speed of the towing vehicle
- b) R.P.M. of the PTO Shaft (540 R.P.M.)
- c) The speed of the conveyor belt variable flow valve.

Set the required spreading depth on a firm surface before starting work. Adjust the conveyor belt variable flow valve to the desired number 1 to 10.

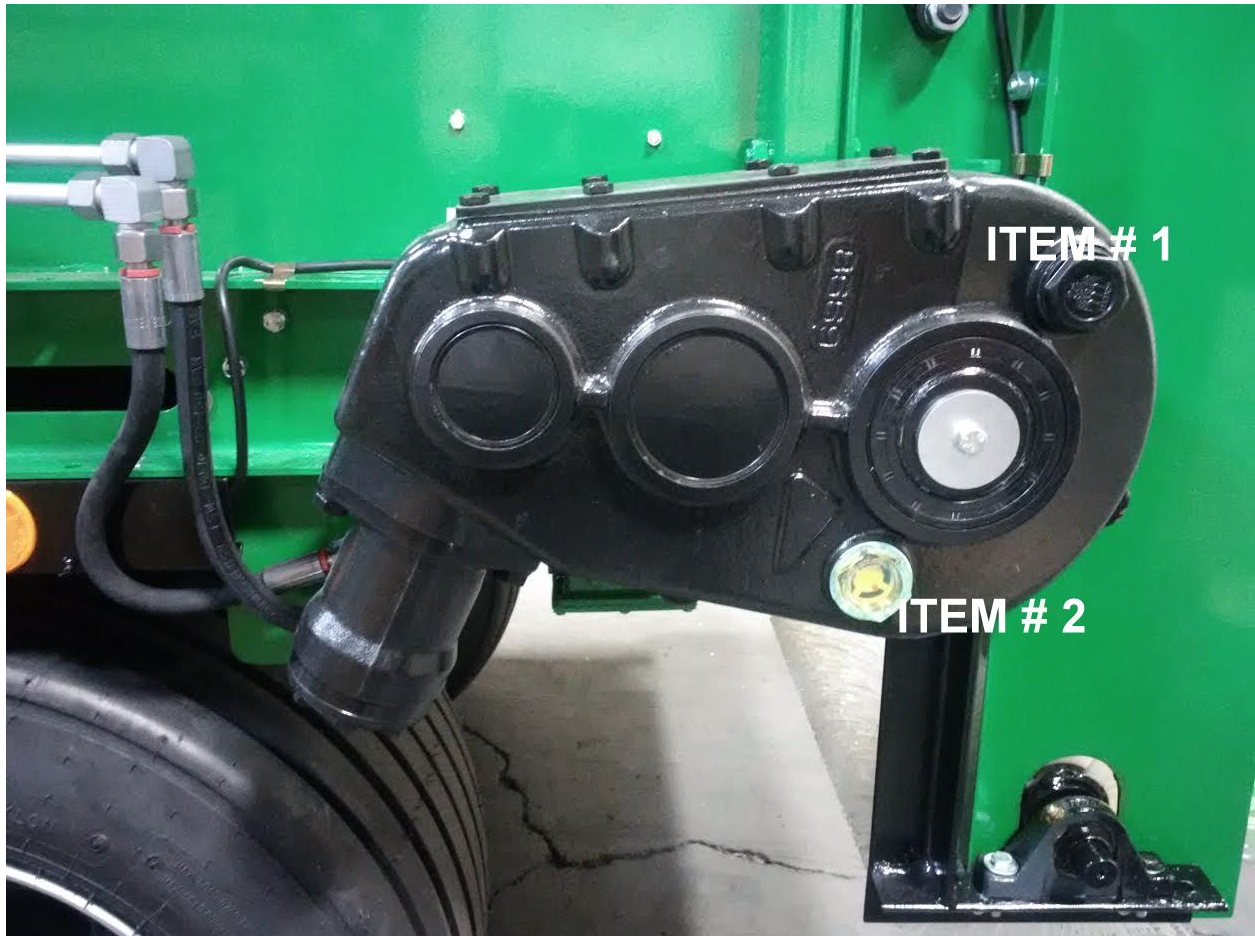


**Before using the reversing operation be sure to record ground speed, flow valve calibration of the conveyor, and material depth for future use.**

## Repair & Maintenance

For conveyor belt gear case change oil every 100 operating hours.

- Unscrew filler cap (Item #1).
- Loosen the oil level site gage (Item #2) and drain off oil.
- Screw in oil level site gage.
- Add oil SAE 120 to 140 right up to the top of the oil level site gage (Item #2).
- Screw on filler cap (Item #1).

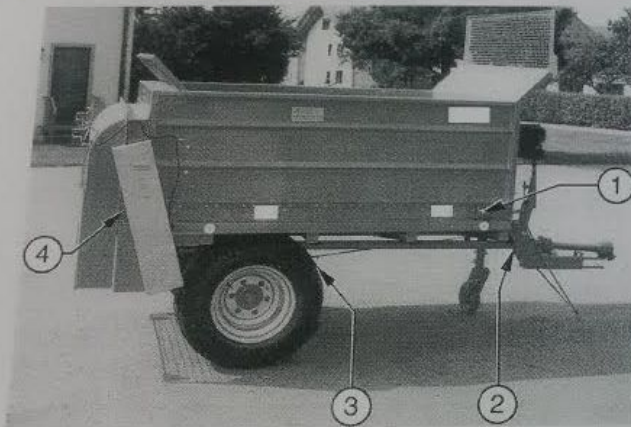


# Repair & Maintenance

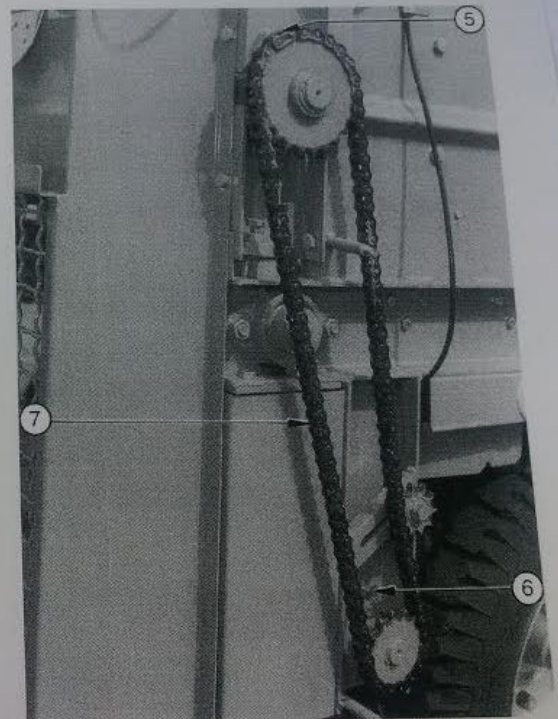
Lubricate topdresser with multipurpose grease every 50 operating hours.

1. Bearings on both sides of the front conveyor belt
2. Forward bearings of the PTO shaft
3. Rear bearings of the PTO shaft
4. Bearings on both sides of the rear conveyor shaft.
5. Bearings on both sides of the spreader drum
6. Bearings on both sides of the axle drive shaft
7. Chain
8. Driving pinion at the rear of the conveyor shaft
9. Wheel set

Note: Bearings without a lubricating nipple do not require greasing.



Note: The two conveyor belt gears have permanent lubrication and therefore do not require maintenance.



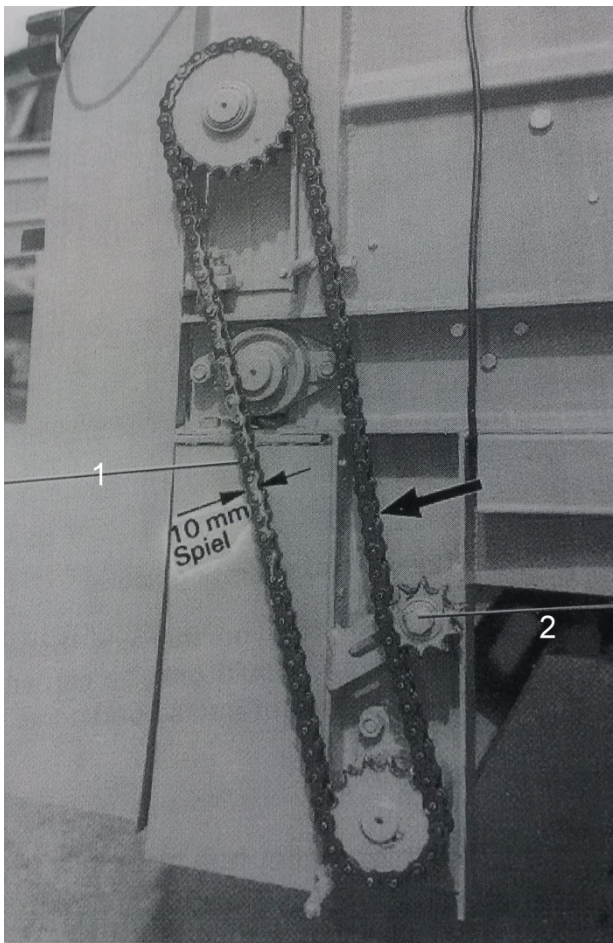


# Stretching the Drive Chain

Stretch the driving chain of the spreader drum every 50 operating hours.

1. Loosen two screws and remove chain cover.
2. Loosen screw on chain adjuster (1).
3. Press chain adjuster down by hand, so that the chain lying on the opposite side (2) has 10mm clearance.
4. Tighten screw of the chain adjuster.
5. Replace chain covering.

Once it is no longer possible to stretch the chain by means of the chain adjuster, shorten the chain by one link at the chain lock.



## Warning:

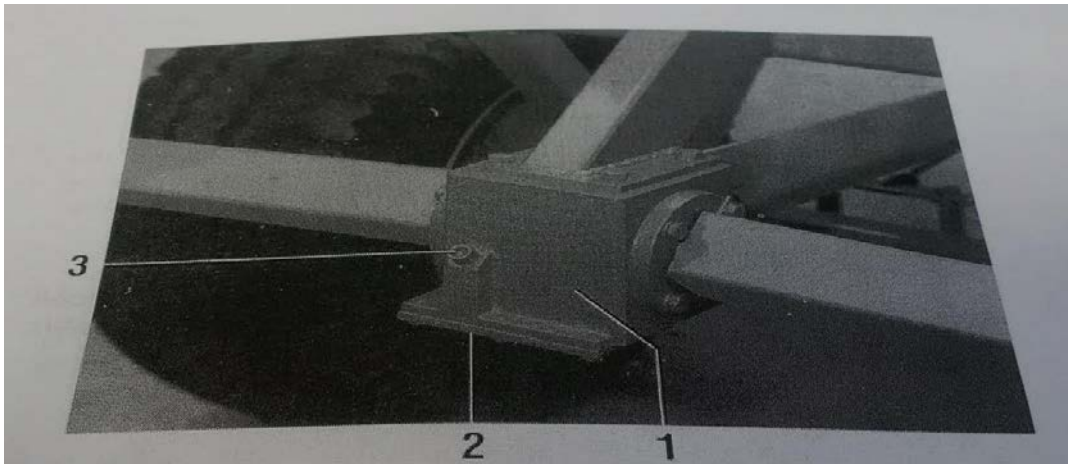
If the chain is stretched too tightly  
This can reduce its life span.

If the chain shows signs of strong  
Wear, replace chain and chain  
Wheels.

# Oil Change

Change oil at the Angular Gear every two years.

1. Screw off the bottomplate (2) of the angular gear (1), drain the oil, and fix the bottom plate with a new gasket.
2. Remove oil level plug (3) and fill with new oil SAE 120 to 140 until it reaches the level of the oil plug (quantity is approximately 1 Litre).
3. Screw on the cap with a new gasket.



# Axle Maintenance

Axle maintenance every 1000 operating hours.

Warning: Maintenance work on the axle (brakes, and hub clearances, etc.) should be carried out by fully trained and authorized personnel only.

1. Tighten wheel nuts.
2. Check wheel hub clearance, hub clearance of the brake drum and have it adjusted, if necessary.
3. Check brake setting.
4. Test brake setting.
5. Test brake lining thickness (minimum 3mm) and, if necessary, have brake lining replaced.

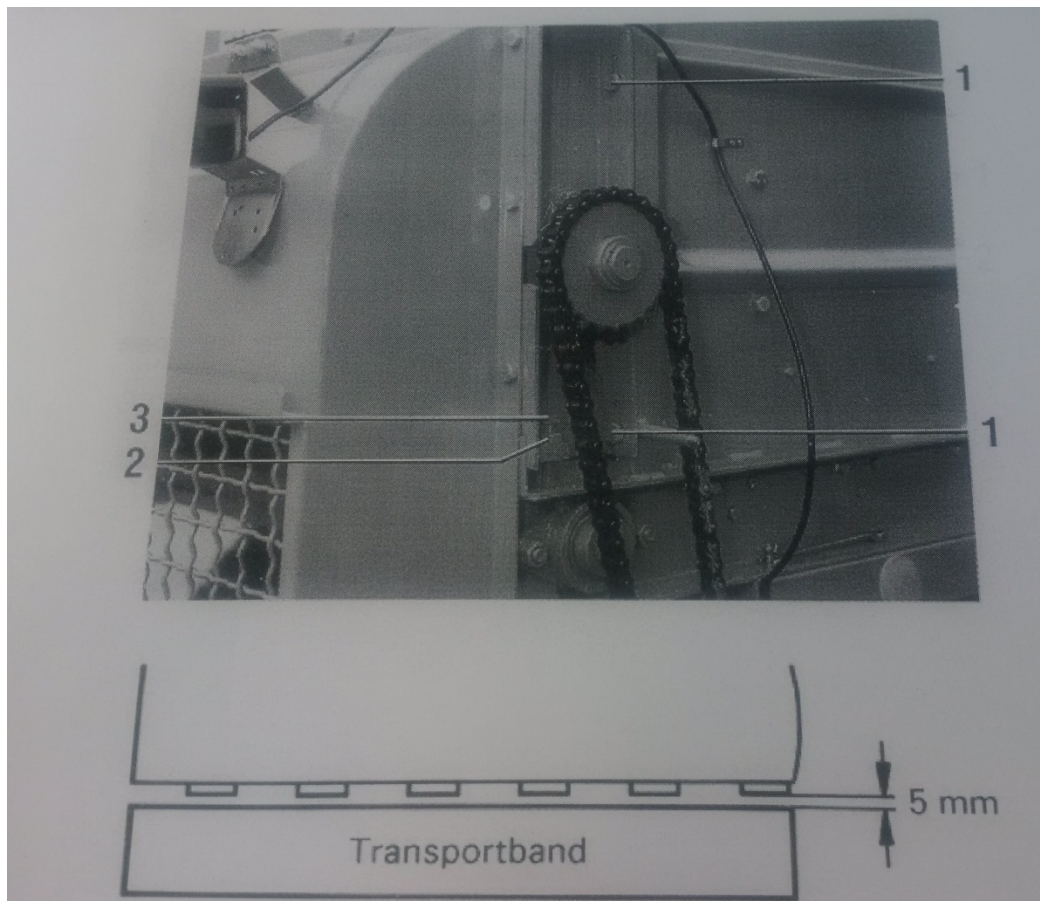
# Adjustment of the Spreader Drum Spacing

Adjust spreader drum spacing according to requirements.

## Warning:

On no account should the distance be reduced to anything less than 5mm, otherwise this could damage the conveyor belt.

1. Loosen two screws (1) each on both sides of the topdresser.
2. Loosen the counter nuts (2) on both sides. Lower the spreader roll by turning the screw (3), until the distance between the spreader drum and the conveyor belt over the whole width is not less than 5mm.
3. Tighten the counter nuts (2) on both sides.
4. Secure the spreader drum mountings with four screws (1).
5. Stretch the spreader drum's driving chain.



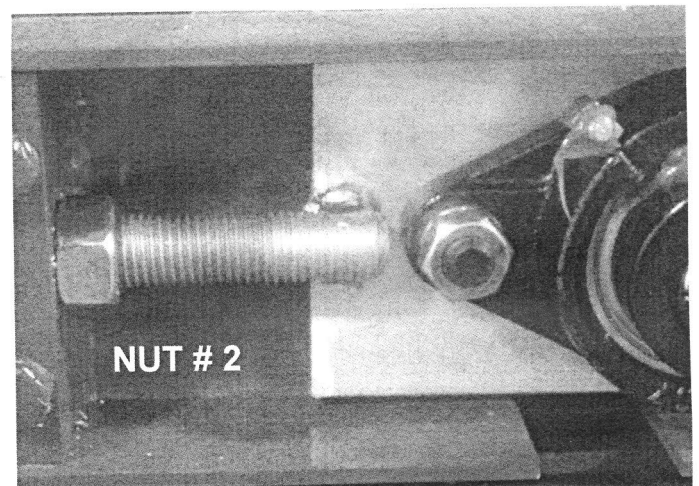
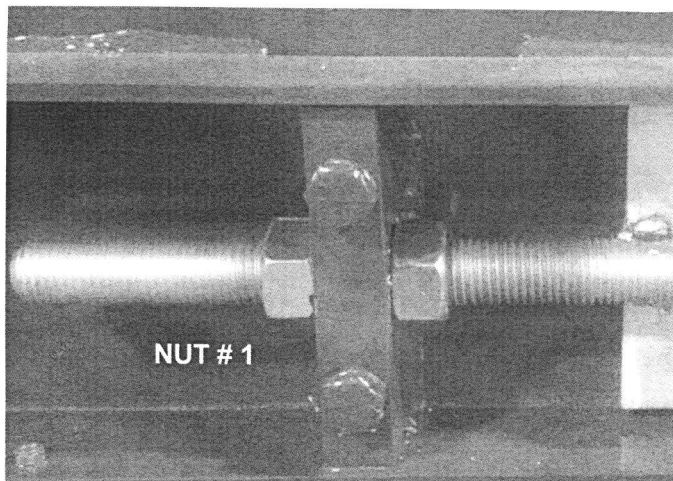
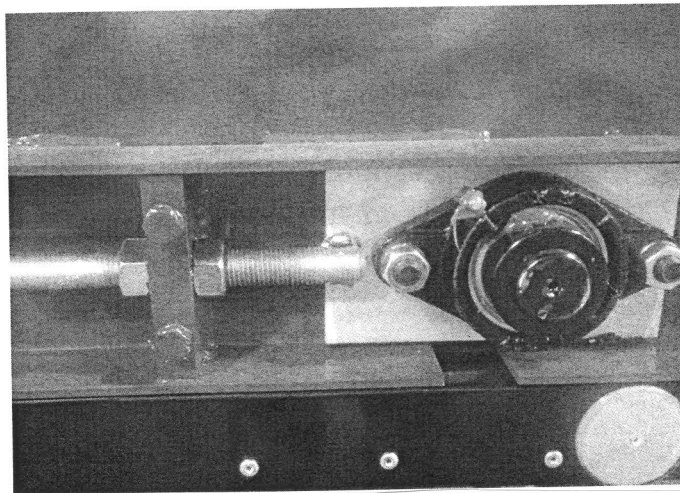
# Stretching the Conveyor Belt

Stretching the conveyor belt in the case of slipping.

## Warning:

Excessive stretching can reduce the life span of the conveyor belt.

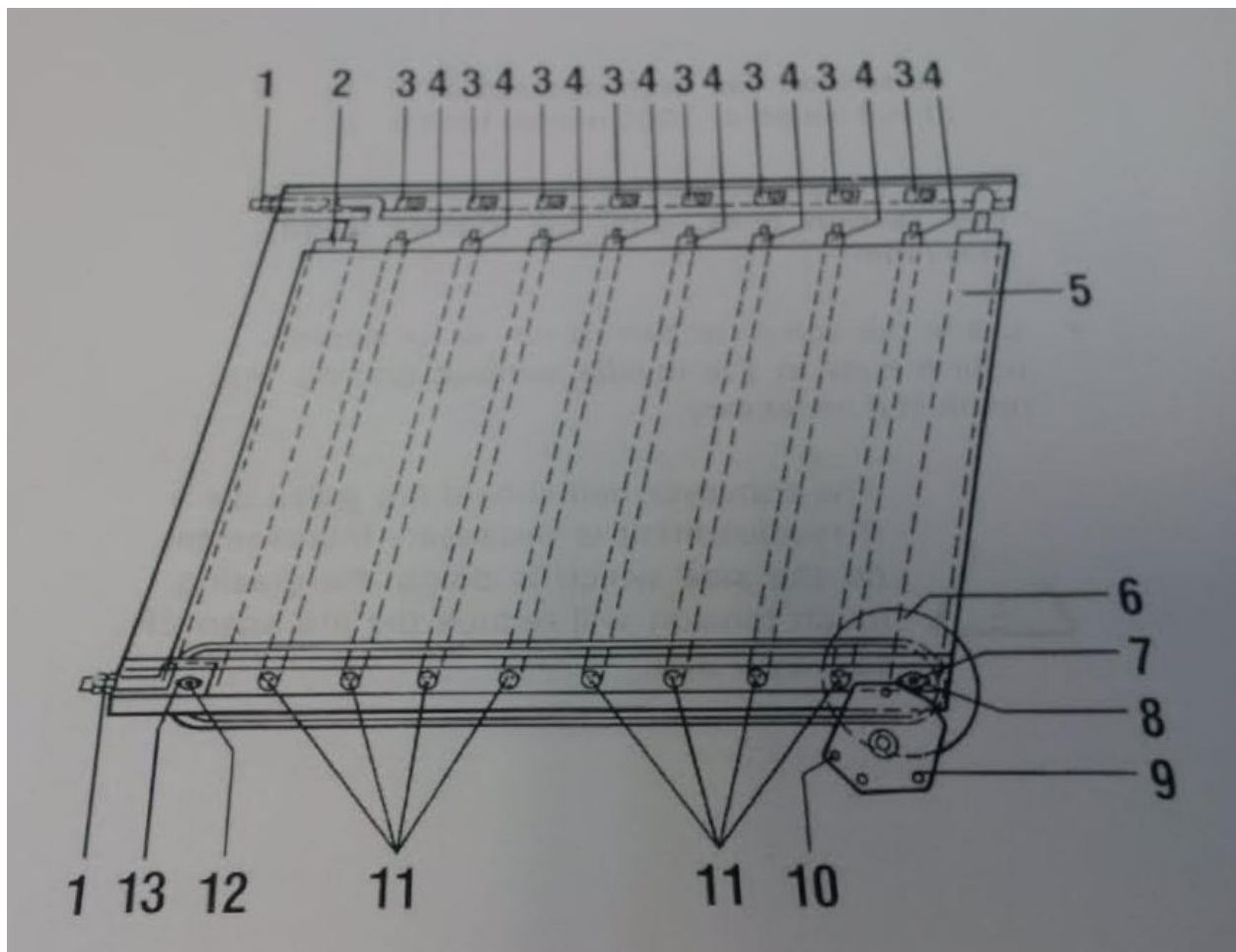
1. Loosen Nut # 1 on the left side.
2. Tighten Nut # 2 on the right side, one turn.
3. Repeat steps 1 and 2 on both sides of the machine.





# Installing and Removing the Conveyor Belt

1. Remove both triangular plate and lateral plate.
2. Release tension in the conveyor belt, evenly loosen the tension bolt (1) on both sides.
3. Take off upper gear (9), for this loosen three screws (10).
4. Remove toothed wheel (6).
5. Remove eccentric ring (7) on flange bearing (8) on both sides and unscrew flange bearing on both sides.
6. Take out eccentric bearing (12) at the flange bearing (1) on both sides.
7. On the right side, take out flange bearing (13) with tension bolt (1).
8. Loosen right-side screws (11) and take out the intermediate roller bearings (3).
9. Loosen left-side screws (11).
10. Remove front (2) and strip rollers (5) as well as the intermediate rollers (4).
11. Drive out conveyor belt towards the back.
12. The re-assembly takes place in reverse order.



# Stretching Conveyor

## Stretching conveyor after assembly

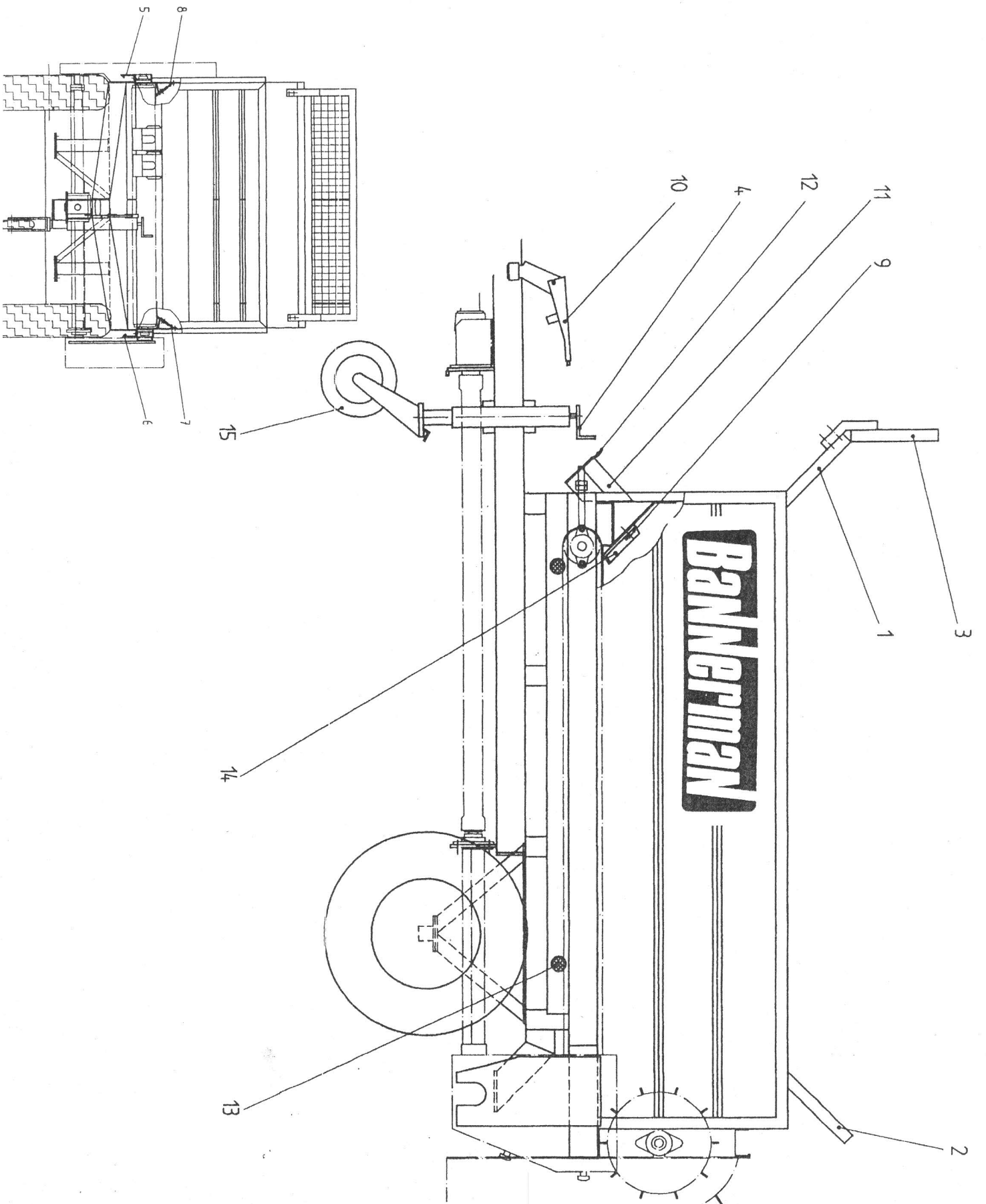
1. Once the tension has been released in the conveyor belt mark out a length of 1000mm on both sides.
2. Evenly stretch both sides of the conveyor belt with the two tension bolts, until the marked length reaches 1007mm.
3. Leave the conveyor belt to run in for approximately 30 minutes until it runs in the middle without grazing the sides, re-adjust if necessary.

## Warning:

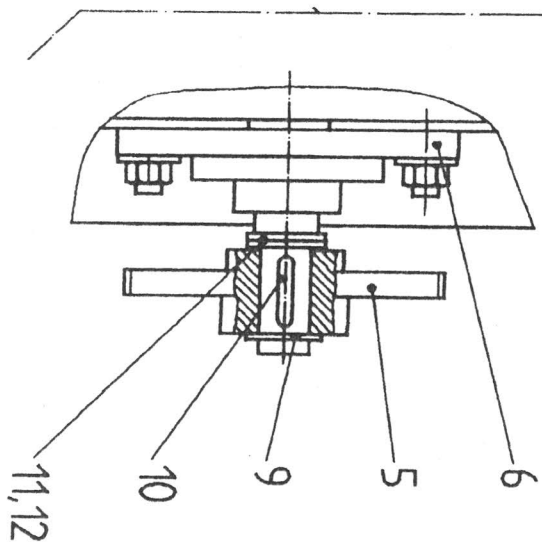
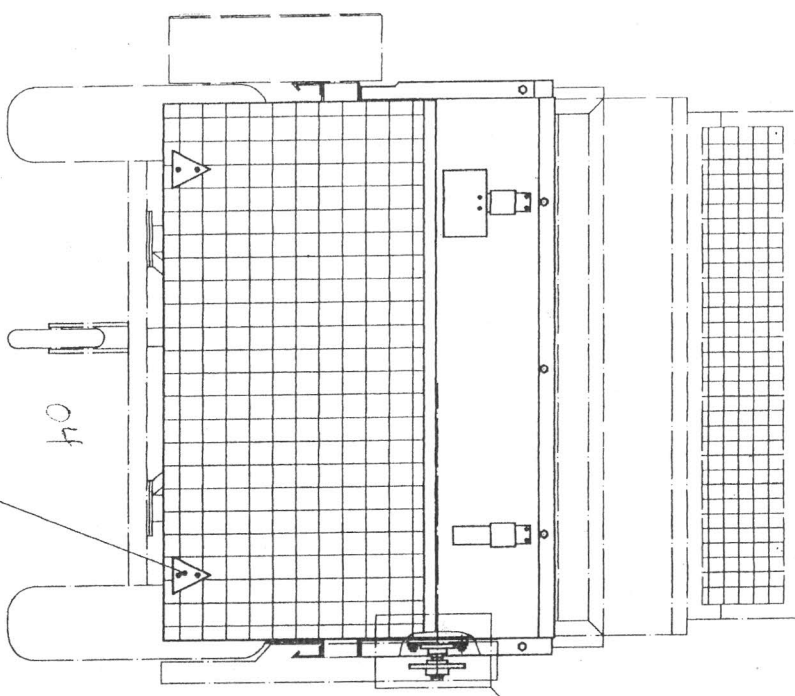
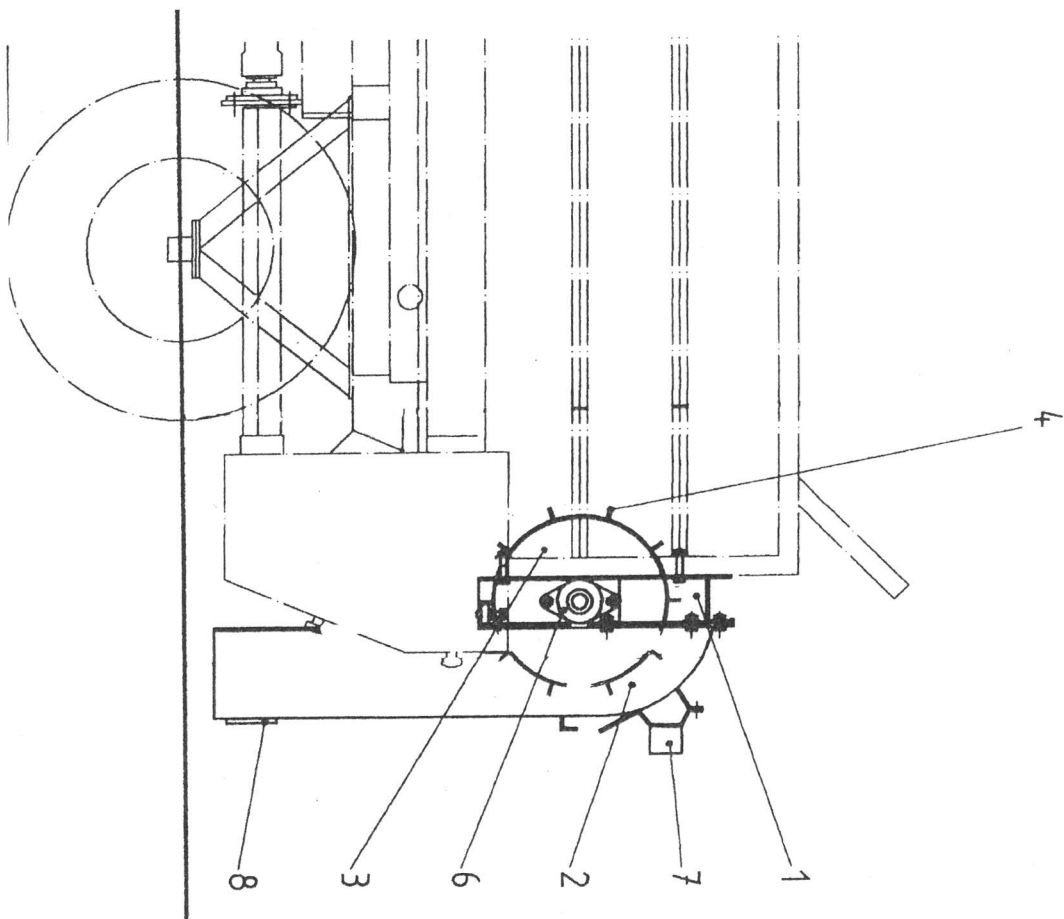
The conveyor belt should not graze the sides. If re-adjustment is necessary increase tension on the side which is doing the grazing. Too much tension will reduce the life span of the belt.

# **TURF TOPPER TOPDRESSER PARTS MANUAL**





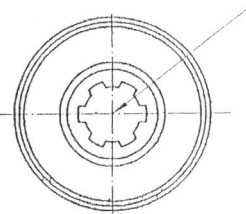
Item #	Part #	Part Description	Notes
1	15443	Filling Plate - Front	
2	15444	Filling Plate - Rear	
3	15713	Stoneguarg	
4	15222	Jockey Wheel with Fixture	
5	15411	Belt Cover - Right	
6	15412	Belt Cover - Left	
7	15426	Stripper - Right	
8	15009	Stripper - Left	
9	15319	Clamp Rail	
10	11007	Complete Lock-in Lever Brake	Special Equipment
11	11016	Wheel Chock	
12	10123	Holder for Wheel Chock	
13	11013	Round Reflector	
14	11037	Rubber Stripper - Front	
15	10303	Rubber Tire for Jockey Wheel	



Item #	Part #	Part Description	Notes
1	15698	Spreading Unit Frame	
2	15714	Hood - Rear	
3	15709	Spreading Roller	
4	15343	Spreading Roller Tooth Set	Consisting of 140 pieces
5	15712	Chain Wheel (Z23)	
6	11035	Flange Bearing (Dia.35)	Lubrication Instructions
7	11009	Lighting Unit	
8	11014	Triangular Reflector	
9	11033	Circlip (35X1.5)	
10	11040	Feather Key (A10X8X30)	
11	10209	Adjusting Washer (45X35X1)	
12	10201	Adjusting Washer (45X35X.5)	

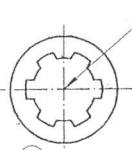
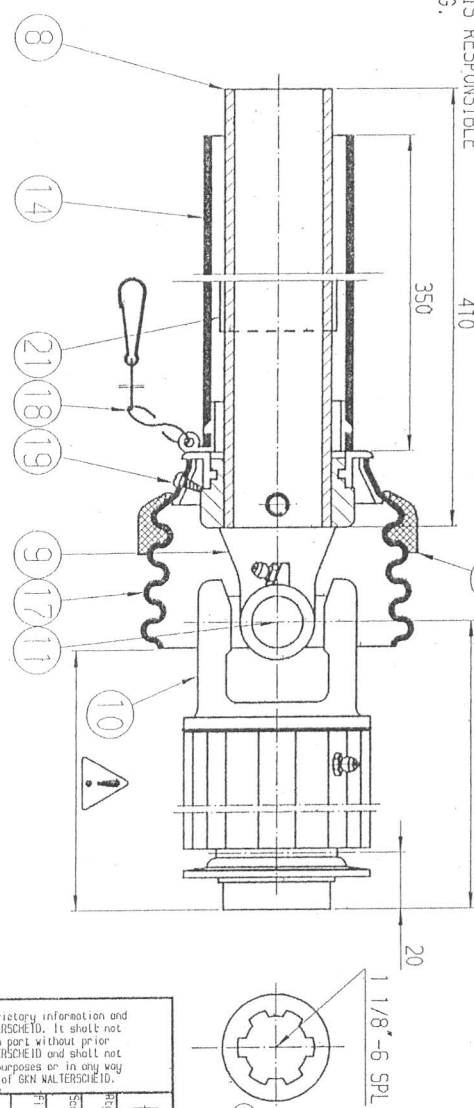
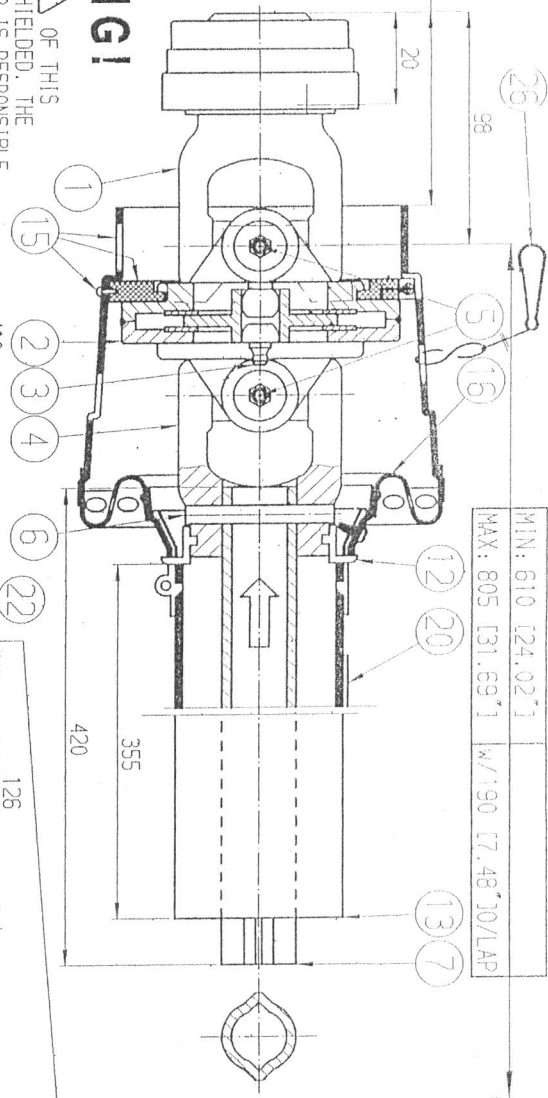
MIN: 610 (24.02")	
MAX: 805 (31.69")	W/ 90 (7.48") O/LAP

1 3/8"-6 SPL



# WARNING!

PORTIONS MARKED OF THIS COMPONENT ARE NOT SHIELDED. THE MACHINE MANUFACTURER IS RESPONSIBLE FOR PROVIDING GUARDING.



ITEM	QTY	UOM	DESCRIPTION
1	1	EA	Yoke 1 3/8"-6 SPL ASGE
2	1	EA	DOUBLE YOKE
3	1	EA	ZERK-IN ITEM 2
4	1	EA	INBOARD YOKE OY
5	2	EA	CROSS & BEARING KIT
6	2	EA	SPRING PIN 10 X 65
7	1	EA	INNER PROFILE OVA
8	1	EA	OUTER PROFILE 16
9	1	EA	INBOARD YOKE 1
10	1	EA	RADIAL PIN CLUTCH
11	1	EA	CROSS & BEARING KIT
12	2	EA	BEARING RING SCIS
13	1	EA	OUT. SHIELD TUBE CYAL
14	1	EA	INN. SHIELD TUBE RND.
15	1	EA	CV CONE & BEARING ASSY.
16	1	EA	SHIELD CONE & FLEX NET ASSY
17	1	EA	SHIELD CONE 4 RIB
18	1	EA	SAFETY CHAIN
19	1	EA	SOREN-IN ITEMS 15, 16, 17
20	1	EA	DECAL OUT.-IN ITEM 13
21	1	EA	DECAL INN.-IN ITEM 8
22	1	EA	REINFORCED COLLAR
23	1	EA	ICE INSTRUCTION MANUAL
24	1	EA	ICE MARK DECAL
25	1	EA	EUROPEAN DECAL
26	1	EA	SAFETY CHAIN L=600mm
	1	EA	ASGE COL. KIT-IN ITEM 1
	1	EA	OD FLG KIT-IN ITEM 10

CLUTCH SETTING:	DIR. OF ROT.	APPL. RPM	THIS DRIVE SHAFT EXCEEDS ASGE S-331.5
400 (FT. LBS.)	295	8	CATEGORY 2 ( ) REGULAR (X) HEAVY
			DUTY SPECIFICATION

APPLICATION	TOP DRESSER
-------------	-------------

HALF SHAFT	
WAL. NUMBER	102238
CUST. NUMBER	

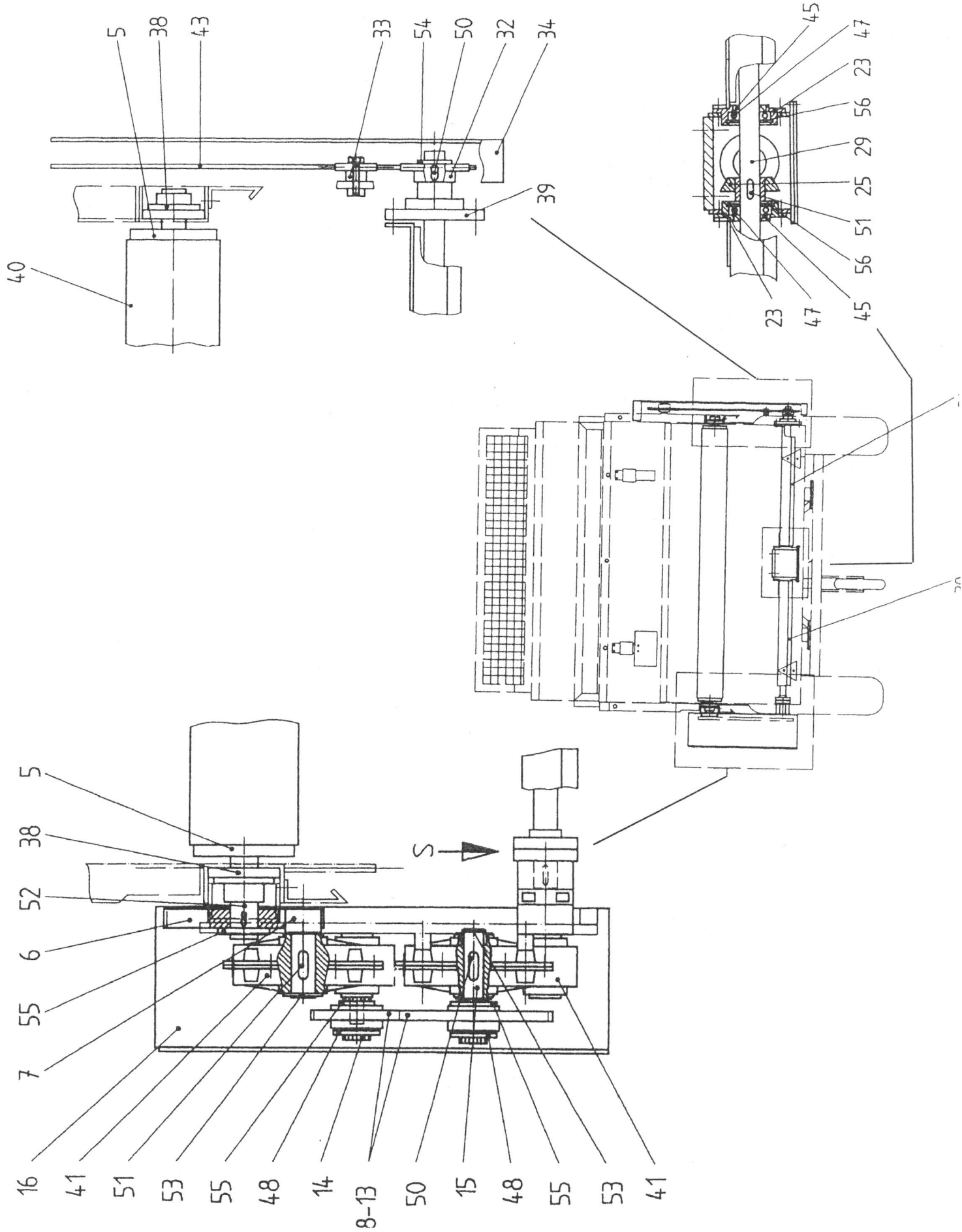
This document contains proprietary information and is the property of GEN WALTERSCHEID. It shall not be reproduced in whole or in part without prior written consent of GEN WALTERSCHEID and shall not be used for manufacturing purposes or in any way detrimental to the interest of GEN WALTERSCHEID.

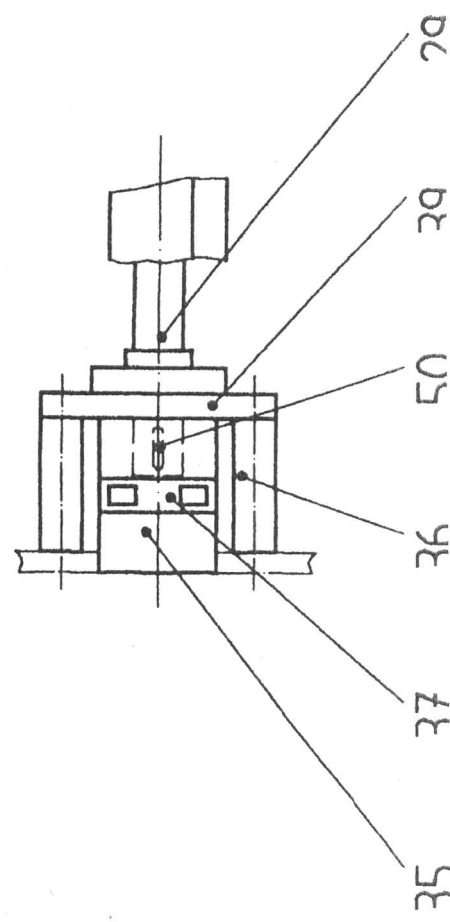
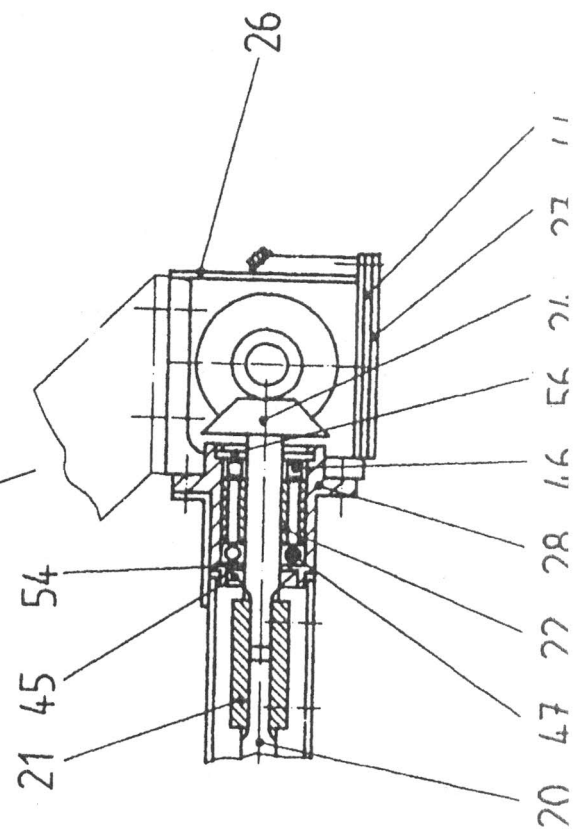
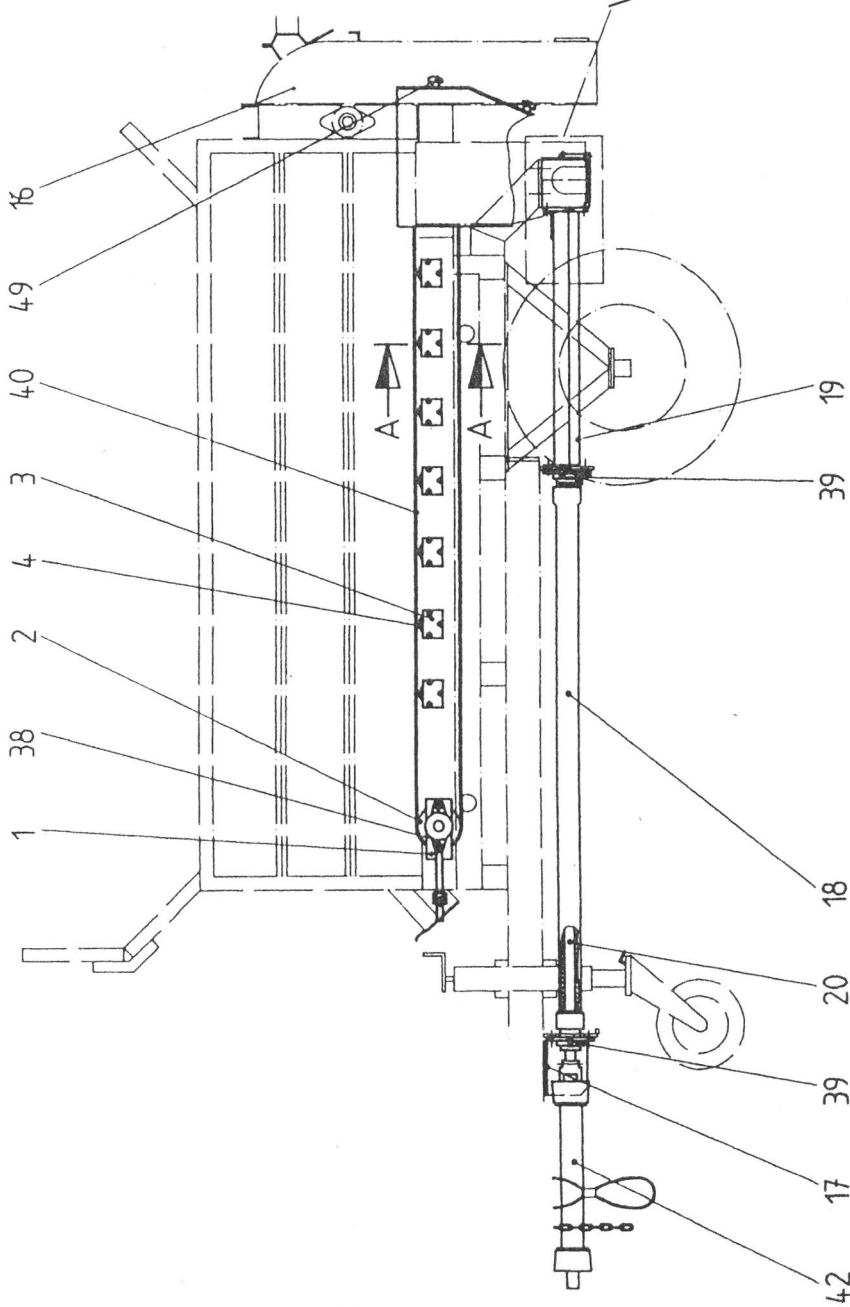
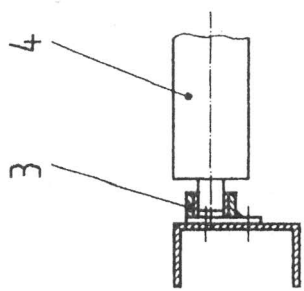
Rev.	Code	Rev.	Code	Description
1	A	1	A	ADD CHAIN, ADD 1/2 SHAF. 210EC05 AFH-3
2	C	2	C	RELEASE FOR PROD. 055EC05 AFH-7
3	NONE	3	NONE	Change Description
4	AFM	4	AFM	None
5	AFM	5	AFM	None
6	AFM	6	AFM	None
7	AFM	7	AFM	None
8	AFM	8	AFM	None
9	AFM	9	AFM	None
10	AFM	10	AFM	None
11	AFM	11	AFM	None
12	AFM	12	AFM	None
13	AFM	13	AFM	None
14	AFM	14	AFM	None
15	AFM	15	AFM	None
16	AFM	16	AFM	None
17	AFM	17	AFM	None
18	AFM	18	AFM	None
19	AFM	19	AFM	None
20	AFM	20	AFM	None
21	AFM	21	AFM	None
22	AFM	22	AFM	None
23	AFM	23	AFM	None
24	AFM	24	AFM	None
25	AFM	25	AFM	None
26	AFM	26	AFM	None
27	AFM	27	AFM	None
28	AFM	28	AFM	None
29	AFM	29	AFM	None
30	AFM	30	AFM	None
31	AFM	31	AFM	None
32	AFM	32	AFM	None
33	AFM	33	AFM	None
34	AFM	34	AFM	None
35	AFM	35	AFM	None
36	AFM	36	AFM	None
37	AFM	37	AFM	None
38	AFM	38	AFM	None
39	AFM	39	AFM	None
40	AFM	40	AFM	None
41	AFM	41	AFM	None
42	AFM	42	AFM	None
43	AFM	43	AFM	None
44	AFM	44	AFM	None
45	AFM	45	AFM	None
46	AFM	46	AFM	None
47	AFM	47	AFM	None
48	AFM	48	AFM	None
49	AFM	49	AFM	None
50	AFM	50	AFM	None
51	AFM	51	AFM	None
52	AFM	52	AFM	None
53	AFM	53	AFM	None
54	AFM	54	AFM	None
55	AFM	55	AFM	None
56	AFM	56	AFM	None
57	AFM	57	AFM	None
58	AFM	58	AFM	None
59	AFM	59	AFM	None
60	AFM	60	AFM	None
61	AFM	61	AFM	None
62	AFM	62	AFM	None
63	AFM	63	AFM	None
64	AFM	64	AFM	None
65	AFM	65	AFM	None
66	AFM	66	AFM	None
67	AFM	67	AFM	None
68	AFM	68	AFM	None
69	AFM	69	AFM	None
70	AFM	70	AFM	None
71	AFM	71	AFM	None
72	AFM	72	AFM	None
73	AFM	73	AFM	None
74	AFM	74	AFM	None
75	AFM	75	AFM	None
76	AFM	76	AFM	None
77	AFM	77	AFM	None
78	AFM	78	AFM	None
79	AFM	79	AFM	None
80	AFM	80	AFM	None
81	AFM	81	AFM	None
82	AFM	82	AFM	None
83	AFM	83	AFM	None
84	AFM	84	AFM	None
85	AFM	85	AFM	None
86	AFM	86	AFM	None
87	AFM	87	AFM	None
88	AFM	88	AFM	None
89	AFM	89	AFM	None
90	AFM	90	AFM	None
91	AFM	91	AFM	None
92	AFM	92	AFM	None
93	AFM	93	AFM	None
94	AFM	94	AFM	None
95	AFM	95	AFM	None
96	AFM	96	AFM	None
97	AFM	97	AFM	None
98	AFM	98	AFM	None
99	AFM	99	AFM	None
100	AFM	100	AFM	None

Jan 2006 2nd version.

Customer: GORDON BANNERMAN LTD	Part No: 691926
Order No: WME2280*SD15	Part No: W17875
Approved: 1220EC05	Part No: 134544 / 355997
Checked: 220EC05	Part No: K32B*610*0V6A/16
Drawn: 050EC05	Part No: WME2280*SD15
Scale: NONE	Part No: 134544 / 355997
Rev: 1	Part No: K32B*610*0V6A/16
Rev: 2	Part No: WME2280*SD15
Rev: 3	Part No: 134544 / 355997
Rev: 4	Part No: K32B*610*0V6A/16
Rev: 5	Part No: WME2280*SD15
Rev: 6	Part No: 134544 / 355997
Rev: 7	Part No: K32B*610*0V6A/16
Rev: 8	Part No: WME2280*SD15
Rev: 9	Part No: 134544 / 355997
Rev: 10	Part No: K32B*610*0V6A/16
Rev: 11	Part No: WME2280*SD15
Rev: 12	Part No: 134544 / 355997
Rev: 13	Part No: K32B*610*0V6A/16
Rev: 14	Part No: WME2280*SD15
Rev: 15	Part No: 134544 / 355997
Rev: 16	Part No: K32B*610*0V6A/16
Rev: 17	Part No: WME2280*SD15
Rev: 18	Part No: 134544 / 355997
Rev: 19	Part No: K32B*610*0V6A/16
Rev: 20	Part No: WME2280*SD15
Rev: 21	Part No: 134544 / 355997
Rev: 22	Part No: K32B*610*0V6A/16
Rev: 23	Part No: WME2280*SD15
Rev: 24	Part No: 134544 / 355997
Rev: 25	Part No: K32B*610*0V6A/16
Rev: 26	Part No: WME2280*SD15
Rev: 27	Part No: 134544 / 355997
Rev: 28	Part No: K32B*610*0V6A/16
Rev: 29	Part No: WME2280*SD15
Rev: 30	Part No: 134544 / 355997
Rev: 31	Part No: K32B*610*0V6A/16
Rev: 32	Part No: WME2280*SD15
Rev: 33	Part No: 134544 / 355997
Rev: 34	Part No: K32B*610*0V6A/16
Rev: 35	Part No: WME2280*SD15
Rev: 36	Part No: 134544 / 355997
Rev: 37	Part No: K32B*610*0V6A/16
Rev: 38	Part No: WME2280*SD15
Rev: 39	Part No: 134544 / 355997
Rev: 40	Part No: K32B*610*0V6A/16
Rev: 41	Part No: WME2280*SD15
Rev: 42	Part No: 134544 / 355997
Rev: 43	Part No: K32B*610*0V6A/16
Rev: 44	Part No: WME2280*SD15
Rev: 45	Part No: 134544 / 355997
Rev: 46	Part No: K32B*610*0V6A/16
Rev: 47	Part No: WME2280*SD15
Rev: 48	Part No: 134544 / 355997
Rev: 49	Part No: K32B*610*0V6A/16
Rev: 50	Part No: WME2280*SD15
Rev: 51	Part No: 134544 / 355997
Rev: 52	Part No: K32B*610*0V6A/16
Rev: 53	Part No: WME2280*SD15
Rev: 54	Part No: 134544 / 355997
Rev: 55	Part No: K32B*610*0V6A/16
Rev: 56	Part No: WME2280*SD15
Rev: 57	Part No: 134544 / 355997
Rev: 58	Part No: K32B*610*0V6A/16
Rev: 59	Part No: WME2280*SD15
Rev: 60	Part No: 134544 / 355997
Rev: 61	Part No: K32B*610*0V6A/16
Rev: 62	Part No: WME2280*SD15
Rev: 63	Part No: 134544 / 355997
Rev: 64	Part No: K32B*610*0V6A/16
Rev: 65	Part No: WME2280*SD15
Rev: 66	Part No: 134544 / 355997
Rev: 67	Part No: K32B*610*0V6A/16
Rev: 68	Part No: WME2280*SD15
Rev: 69	Part No: 134544 / 355997
Rev: 70	Part No: K32B*610*0V6A/16
Rev: 71	Part No: WME2280*SD15
Rev: 72	Part No: 134544 / 355997
Rev: 73	Part No: K32B*610*0V6A/16
Rev: 74	Part No: WME2280*SD15
Rev: 75	Part No: 134544 / 355997
Rev: 76	Part No: K32B*610*0V6A/16
Rev: 77	Part No: WME2280*SD15
Rev: 78	Part No: 134544 / 355997
Rev: 79	Part No: K32B*610*0V6A/16
Rev: 80	Part No: WME2280*SD15
Rev: 81	Part No: 134544 / 355997
Rev: 82	Part No: K32B*610*0V6A/16
Rev: 83	Part No: WME2280*SD15
Rev: 84	Part No: 134544 / 355997
Rev: 85	Part No: K32B*610*0V6A/16
Rev: 86	Part No: WME2280*SD15
Rev: 87	Part No: 134544 / 355997
Rev: 88	Part No: K32B*610*0V6A/16
Rev: 89	Part No: WME2280*SD15
Rev: 90	Part No: 134544 / 355997
Rev: 91	Part No: K32B*610*0V6A/16
Rev: 92	Part No: WME2280*SD15
Rev: 93	Part No: 134544 / 355997
Rev: 94	Part No: K32B*610*0V6A/16
Rev: 95	Part No: WME2280*SD15
Rev: 96	Part No: 134544 / 355997
Rev: 97	Part No: K32B*610*0V6A/16
Rev: 98	Part No: WME2280*SD15
Rev: 99	Part No: 134544 / 355997
Rev: 100	Part No: K32B*610*0V6A/16

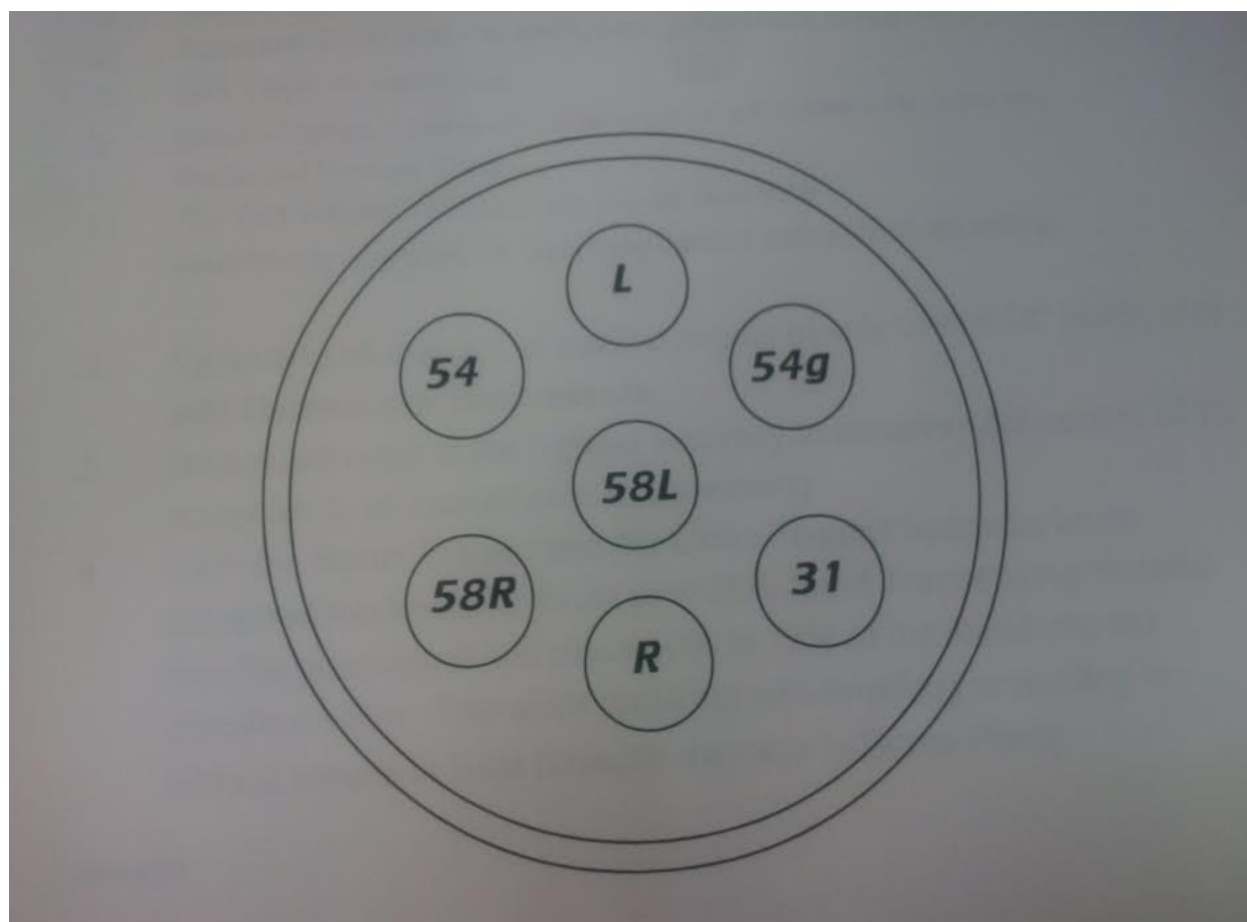






Item #	Part #	Part Description	Notes		Item #	Part #	Part Description	Notes
1	15704	Clamping Device			29	15695	Transmission Cross Member	
2	16049	Roller - Front			30	15380	Shaft Cover - Left	
3	15703	Pedestal			31	15379	Shaft Cover - Right	
4	16045	Intermediate Roller			32	15697	Chain Wheel	
5	16048	Roller - Rear			33	15404	Chain Tensioner, Complete	
6	15711	Gear (Z49)			34	15710	Chain Guard	
7	15107	Pinion (Z12)			35	15699	Jaw Clutch	
8		Change Gear (Z27)			36	15336	Distance Bush	
9	15104	Change Gear (Z47)	Standard		37	10242	Rubber Scaper for Clutch	
10		Change Gear (Z20)			38	11035	Flange Bearing (Dia.35)	Lubrication Instructions
11	15105	Change Gear (Z54)			39	11001	Flange Bearing (.30)	Lubrication Instructions
12		Change Gear (Z34)	Special Equipment		40	10385	Conveyor Belt	
13	15106	Change Gear (Z40)			41	11031	Slip-On Gear	
14	15345	Profile Brush			42	10053	Shaft with Friction Clutch	
15	15344	Profile Shaft			43	11038	Roller Chain	
16	6240	Transmission Guard			44	11010	Transmission Gasket	
17	15414	Shaft Guard			45	11006	Rotary Shaft Lip Seal	
18	15060	Protective Pipe			46	11017	Ball Bearing (6206)	
19	15378	Shaft Cover - Front			47	11003	Ball Bearing (6026Z)	
20	15715	Longitudinal Shaft			48	11039	Folding Split Pin	
21	15006	Connecting Sleeve			49	11041	Star Handle	
22	15138	Distance Bush (Dia. 38X45)			50	11000	Feather Key (A8X7X30)	
23	15694	Gearbox Flange	Use Sealing Compound		51	11004	Feather Key (A8X7X35)	
24	15691	Bevel Gear (Z13)			52	11040	Feather Key (A10X8X30)	
25	15679	Bevel Gear (Z18)			53	11008	Circlip (25X1.2)	
26	15696	Gearbox			54	11002	Circlip (30X1.5)	
27	15693	Gearbox Cover			55	11033	Circlip (35X1.5)	
28	15645	Gearbox Flange	Use Sealing Compound		56	11005	Circlip (62X2)	

Code Designation	Function	Cable Colour
L	Left Indicator	Yellow
54g	Towing Vehicle Battery (+)	
31	Ground	White
R	Right Indicator	Green
58R	Right Rear Light	Brown
54	Brake Lights	Red
58L	Left Rear Light	Black



*Equipment for professional turf management*



A division of Gordon Bannerman Ltd.

41 Kelfield Street, Rexdale, Ontario Canada M9W 5A3 • Telephone 416-247-7875 • Fax 416-247-6540

---

Toll Free • Canada 1-800-325-4871 • USA 1-800-665-2696

## TOPDRESSER FACTS

### DID YOU KNOW OUR MACHINES ARE CAPABLE OF:

1. SPREADING:
  - a) Sand
  - b) Sand Peat Loam Mixtures
  - c) Sand/Soil Mixtures
  - d) Organic Top Soil with Leaf Mulch
  - e) Manures & Soil Mixtures
  - f) Calcine Clay – for ball diamonds and other infield baseball diamond mixtures
  - g) Aggregate Stone Dust – for walking paths, golf cart paths, running tracks
  - h) Bark Chips – for walking paths
  - i) Grass Clippings – that need to be dispensed on golf courses in the roughs daily
  - j) Reclaimed Sewage Sludge
  - k) The Turf Topper with pin drums can be used as a mixer/blender/shredder for combining various soils prior to spreading
2. Spreading all material to desired depths evenly over a 58" width, only with **Bannerman Topdressers**.
3. Being calibrated to the highest accuracy to achieve cost control of the materials to be spread prior to dispensing.
4. The **Sport Topper's** hydraulic brush enables the topdresser to thrust over 30% Sand topdressing material into the grass plant and place 10% to 15% of the Sand into the aeration holes. Therefore requiring less brushing or matting in.  
(Which results in Less possible damage to Grass Plant)



A division of Gordon Bannerman Ltd.

41 Kelfield Street, Rexdale, Ontario Canada M9W 5A3 • Telephone 416-247-7875 • Fax 416-247-6540

Toll Free • Canada 1-800-325-4871 • USA 1-800-665-2696

## HELPFUL TOPDRESSING HINTS

### Approximate Topdressing Quantities

- A 1/8" Topdressing requires 0.4 cubic yards/1,000 square feet
- A 1/4" Topdressing requires 0.8 cubic yards/1,000 square feet
- A 1" Topdressing requires 3.1 cubic yards/1,000 square feet

### Athletic Field Measurements (Standard Areas)

Field Type	Feet Squared	Acres
Football (inside boundary lines)	58,000	1.3
Football (inside running track)	100,000	2.3
Soccer (minimum inside boundary)	65,000	1.5
Baseball (regulation)	88,000	2
Polo (inside boundary lines)	400,000	10

### Approximate Material Weights (Cubic Yard)

Loam (loose).....	2,000 Lbs
Clay (compact & wet).....	3,050 Lbs
Clay Sand (compact).....	3,250 Lbs
Silty Sand (wet).....	3,100 Lbs
Sand (dry).....	2,200 Lbs
Gravel.....	3,450 Lbs
Crusted Stone.....	36,000 Lbs
Peat Moss (compact).....	450 Lbs
Peat Moss (loose).....	110 Lbs

### Useful Formulas

- Area of rectangle equals length x widths
- Area of right triangle equals 1/2 base x height
- Volume of pile equals 1/3 height x the area of the base
- Area of circle equals 3.14 (II) x the radius squared  
( or 7.8 x the diameter squared)

[www.sportsturfmagic.com](http://www.sportsturfmagic.com)