



**Wet Line Marker**  
**Model No.: B-WLM-234**  
**Operation & Parts Manual**

**GORDON BANNERMAN LIMITED**  
41 Kelfield Street, Rexdale, ON M9W 5A3 Canada  
T: (416) 247-7875 F: (416) 247-6540  
[www.sportsturfmagic.com](http://www.sportsturfmagic.com)

## Table of Contents

Cover Page	1
Table of Contents	2
Welcome to Bannerman	3
Warranty	4
Safety Precautions	5
Belt Installation & Operating Instructions	6
Helpful Hints & Cleaning Instructions	7
Belt Removal, Lubrication, & Material Mixing	8
Line Marking Example	9
B-WLM-234 Wet Line Marker Parts Diagram	10
Wet Line Marker Parts Breakdown	11
Paint Saver Roller Assembly Parts Diagram and Breakdown	12
Contact Us	13

**GORDON BANNERMAN LIMITED**

41 Kelfield Street, Rexdale, ON M9W 5A3 Canada

T: (416) 247-7875 F: (416) 247-6540

[www.sportsturfmagic.com](http://www.sportsturfmagic.com)

## Wet Line Marker (B-WLM-234)

Dear Owner,

**Welcome to Bannerman, the Home of Sports Turf Magic.**

Your new **B-WLM-234 Wet Line Marker** is designed to meet and exceed your lining requirements. The ease of operation and low maintenance will give you many trouble free years of use. Please make certain that you read and understand the important instructions for the assembly, adjustment, operations, safety, and maintenance contained in this manual. If there are any instructions which you do not fully understand, contact either your dealer or Bannerman Ltd. for clarification prior to using the unit.

When in need of replacement parts, specify the model and serial number of your **B-WLM-234 Wet Line Marker**. The serial plate that identifies your model number and the serial number is located between the rear wheels on the tank. To give you many years of service, regular preventative maintenance is required. Should you require further assistance, please feel free to contact your local Bannerman dealer or Bannerman directly.

Regards,



George Bannerman  
Corporate Secretary

**GORDON BANNERMAN LIMITED**

41 Kelfield Street, Rexdale, ON M9W 5A3 Canada

T: (416) 247-7875 F: (416) 247-6540

[www.sportsturfmagic.com](http://www.sportsturfmagic.com)

## Warranty

**Bannerman Ltd** warrants all **Bannerman B-WLM-234 Wet Line Markers** to be free from defects in material and workmanship under normal use and service for a period of 90 days from date of use. We must receive the Warranty Card and Declaration or Delivery Card filled out in its entirety, via post, fax, or email within 15 days of date of sale. It is the responsibility of the end user to make sure that the Warranty Card has been filled out and submitted to Bannerman Ltd. This warranty does not guarantee a particular service life of the products. Service life will vary with application, operating environment, level of maintenance and other factors beyond our control.

**Bannerman Ltd's** sole responsibilities for the **Bannerman B-WLM-234 Wet Line Marker** or parts determined to be defective and covered by this warranty is limited to repairing the product or part. An allowance is to be applied to the labour cost for the removal and replacement.

Prior authorization from **Bannerman Ltd** must be obtained before replacing or returning any part (s), or incurring any cost of labour. No charges for expense incurred in parts, labour or transportation by unauthorized persons will be allowed under this warranty. **Bannerman Ltd** reserves the right of any part or Bannerman assembly (with transportation prepaid) claimed to be covered under this warranty.

**Bannerman Ltd** shall not be liable, in event, for proximate, incidental, consequential, special or other damages. This includes, but it not limited to, damages for loss of production, loss of profit, loss of opportunity, or injury to persons arising out of any breach in this warranty.

**THERE ARE NO WARRANTIES, EXPRESSED OR IMPLIED, INCLUDING THE WARRANTY OF MERCHANTABILITY, WARRANTY OF FITNESS FOR PARTICULAR PURPOSE, OR ANY OTHER WARRANTY EXTENDING BEYOND THAT SET FORTH ABOVE.**

### **GORDON BANNERMAN LIMITED**

41 Kelfield Street, Rexdale, M9W 5A3  
Ontario, Canada

### **CONTACT US:**

**CAN 1-800-325-4871**

**USA 1-800-665-2696**

[info@sportsturmagic.com](mailto:info@sportsturmagic.com)

### **GORDON BANNERMAN LIMITED**

41 Kelfield Street, Rexdale, ON M9W 5A3 Canada

T: (416) 247-7875 F: (416) 247-6540

[www.sportsturmagic.com](http://www.sportsturmagic.com)

## Work Safely – Follow these Rules!

**Please Note:** A careful operator is the best insurance against an accident.

1. Do not wear loose fitting clothing that may catch in moving parts.
2. Use extreme care when making adjustments.
3. Always use proper tools or equipment for the job at hand.
4. Before and during operation the area should be checked to assure that the area is clear of obstacles, hazards and personnel.
5. Extreme caution should be exercised when operating close to ditches, fences or on hill sides
6. Hands, feet, clothing and other objects must be kept away from all moving parts.
7. Always read the operating instructions carefully and understand the controls before commencing work.
8. Safety guards are supplied for your protection. Use them and make sure they are correctly in position.
9. Before starting work always visually check machines for damage or wear to working parts.
10. Do not allow any unauthorized person to handle machines in any way at any time.

### **GORDON BANNERMAN LIMITED**

41 Kelfield Street, Rexdale, ON M9W 5A3 Canada

T: (416) 247-7875 F: (416) 247-6540

[www.sportsturfmagic.com](http://www.sportsturfmagic.com)

## Belt Installation & Operating Instructions

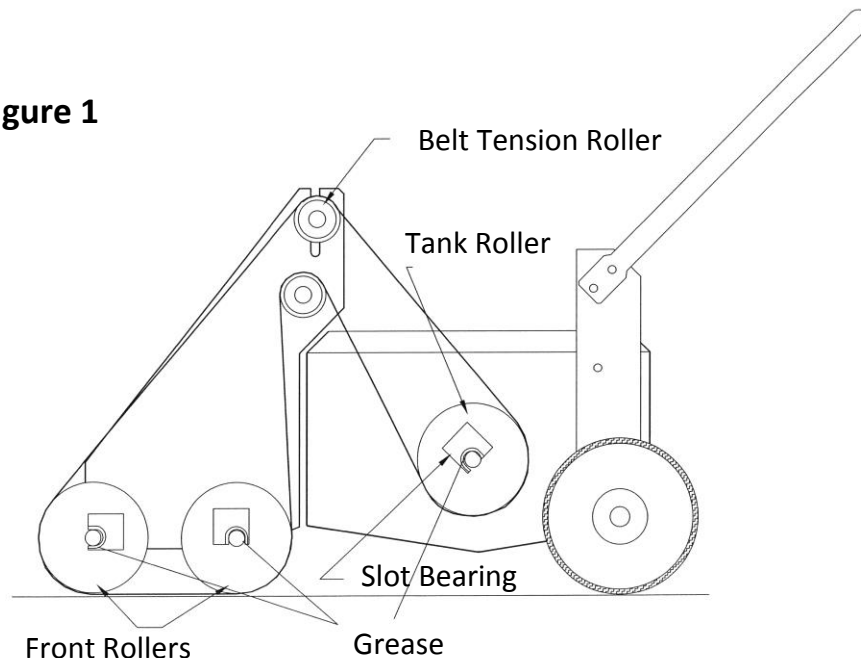
We want you to obtain the best performance from this equipment. If you have any difficulty in carrying out the following instructions please contact us or your local representative or dealer.

**Operating Principle:** as the machine is pushed forward the belt system transfers the marking liquid from the tank to the ground - and due to the large area of contact of the belt with the surface - a continuous supply of lining liquid is assured under the most difficult conditions, on wet or dry surfaces. There are three widths of belts available for most requirements which can be changed very quickly without the use of tools.

Before starting operations:

1. Completely read this manual. Become completely familiar with the controls and operation before actual use of this Wet Line Marker.
2. Belt Installation: Put the two front rollers inside the belt (the two rollers with the short shafts), locating the grooves in the "V" section of the belt. Lift the front of the machine and fit the two front rollers into the bearings and let the free end lie in the tank. Pass the tension roller through the belt and fit into position. Place the tank roller inside the belt and locate in the slot bearings and re-tension the belt. (see Fig.1)

**Figure 1**



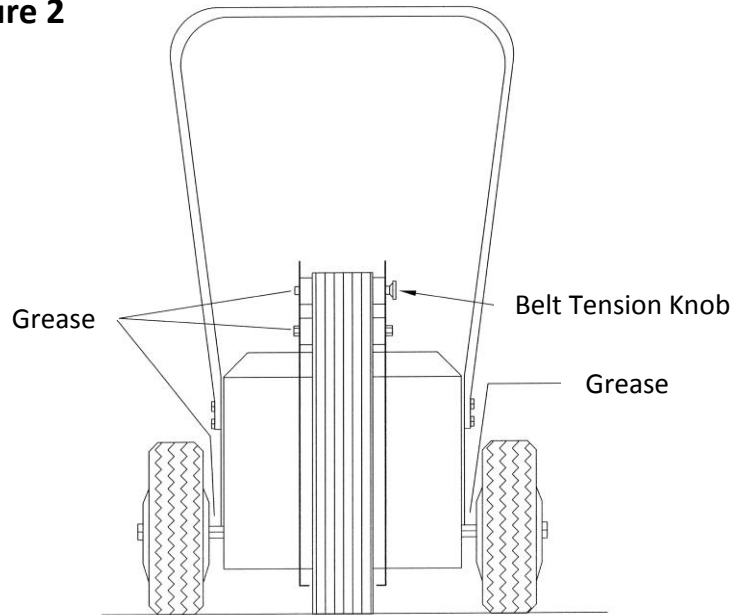
3. Lightly tension the belt and secure with the plastic tension knob. Excessive tension is unnecessary and can make the machine difficult to push.
4. Ensure that the slotted bearings and rear wheels are well greased and rotate freely. (see Fig. 2)
5. Fill the container with the marking liquid and the Wet Line Marker is ready for use.

### GORDON BANNERMAN LIMITED

41 Kelfield Street, Rexdale, ON M9W 5A3 Canada

T: (416) 247-7875 F: (416) 247-6540

[www.sportsturfmagic.com](http://www.sportsturfmagic.com)

**Figure 2**

\*Be sure to clean and grease trouble areas after each day of use.

## Helpful Hints

- If the ground to be marked is rough or muddy, the best results can be obtained by lifting the rear wheels, clear of the ground and operate the Wet Line Marker on the belt.
- When reaching the end of a line, pull the Wet Line Marker backwards for a short distance to allow excess liquid to drain off of the belt.
- When marking out circles or semi-circles lift the rear wheels, clear of the ground and operate the Wet Line Marker on the belt.
- To enable, initial marking of a circle of a known radius for the first time, a small hook is located at the side of the nose assembly, to which a rope or light chain of the correct length can be secured and pegged in the center of the circle.
- Mark with low-cost latex paint. There is no harmful dust or vapours, and it does not harm the grass or environment.

## Cleaning

Always wash out and off the Wet Line Marker when through for the day. Leaving it overnight with a coating of lining liquid can present a difficult job of cleaning. The belt and roller can be quickly detached, and immersed in water for easy cleaning.

### **GORDON BANNERMAN LIMITED**

41 Kelfield Street, Rexdale, ON M9W 5A3 Canada

T: (416) 247-7875 F: (416) 247-6540

[www.sportsturfmagic.com](http://www.sportsturfmagic.com)

## Belt Removal

1. Slacken the belt tension knob and lower the tension roller down the slot.
2. Push the tank roller downwards to clear the slot bearings, and lift the roller and the belt out of the tank.
3. Then tension roller can now be lifted out of the slots and the two front rollers will pull out of the slot bearings leaving the rollers and belt free.

## Lubrication

Regular attention to lubrication points indicated on Figures #1 and #2 are important in ensuring that the Wet Line Marker can be operated without difficulty.

## Material Mixing

The Bannerman Wet Line Marker will apply all marking compound mixtures, including lime. Always mix materials in a bucket, not in the Wet Line Marker.

**Lime:** The best effect is a mixture of: 2:1 (two parts lime to one parts water)

**Paint:** For a 2 inch wide line or the initial marking: 1:1 (one part latex paint to one part water)  
For regular marking (redoing existing lines): 1:2 (one part latex paint to two parts water)

**Creosote:** It is NOT advisable, or recommended to use the Wet Line Marker for the application of Creosote, as this can result in rapid deterioration of the rubber belt. If Creosote is used, the Marker should be thoroughly cleaned and all traces of the material removed from the rubber belt and rollers immediately after use. We regret that we cannot accept any liability for damage caused to the machine due to the use of creosote or similar materials.

### GORDON BANNERMAN LIMITED

41 Kelfield Street, Rexdale, ON M9W 5A3 Canada  
T: (416) 247-7875 F: (416) 247-6540  
[www.sportsturfmagic.com](http://www.sportsturfmagic.com)

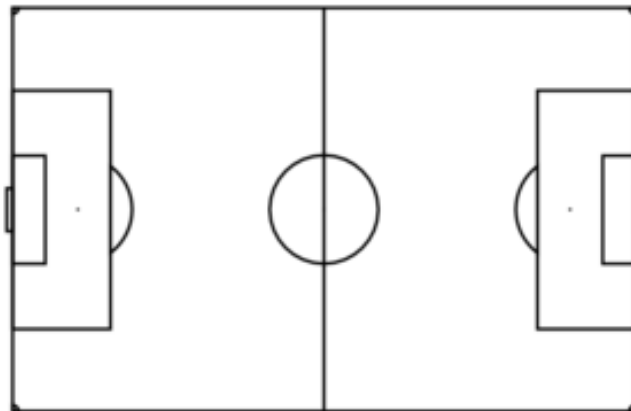


## Line Marking Example

We estimate that 2 ½ gallons need to be mixed for perimeter lines on a soccer pitch, 1 gallon for goal lines and center line on the soccer pitch, and 1 gallon of mix for miscellaneous markings. Approximately 6 gallons Latex paint mixed with 6 gallons of water (to start). We recommend that you use the least expensive Latex paint (interior or exterior).

It is recommended that the grass where the lines have to be painted should be kept cut at 1 to 1 ½", to save on paint. To cut the grass at this length, we recommend a Line Trimmer or the Bannerman Pre-Line Mower.

For regular markings, around every two weeks (depending on field use), you may be able to mix 1/3 parts paint to 2/3 parts water, using 30-40% less paint.



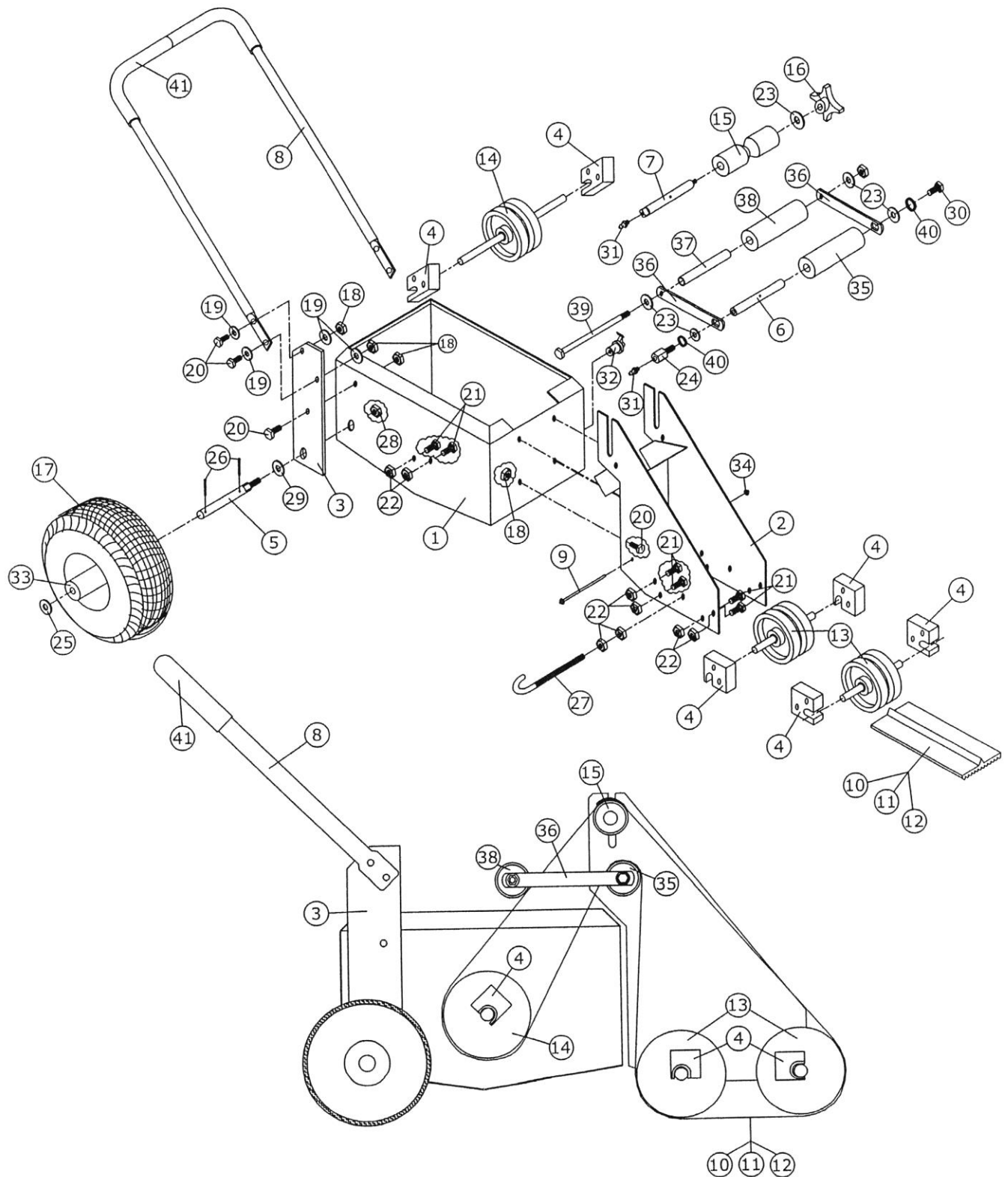
### GORDON BANNERMAN LIMITED

41 Kelfield Street, Rexdale, ON M9W 5A3 Canada

T: (416) 247-7875 F: (416) 247-6540

[www.sportsturfmagic.com](http://www.sportsturfmagic.com)

# Bannerman Wet Line Marker



## GORDON BANNERMAN LIMITED

41 Kelfield Street, Rexdale, ON M9W 5A3 Canada

T: (416) 247-7875 F: (416) 247-6540

[www.sportsturfmagic.com](http://www.sportsturfmagic.com)

<b>Bannerman Wet Line Marker Parts List</b>			
<b>#</b>	<b>Part #</b>	<b>Description</b>	<b>Qty</b>
1	01001	Tank Assembly	1
2	01002	Nose Assembly	1
3	01003	Handle Plate	2
4	01004	Roller Bracket	6
5	01006	Wheel Axle	2
6	01007	Top Shaft 4 - 5/8"	1
7	01008	Top Shaft 5 - 5/8"	1
8	02043	Upper Handle	1
9	01010	Belt Scraper	1
10	01011	Ribbed Rubber Belt 2"	1
11	01012	Ribbed Rubber Belt 3"	1
12	01013	Ribbed Rubber Belt 4"	1
13	01014	Front Roller Assembly	2
14	01015	Tank Roller Assembly	1
15	01016	Guide Roller	1
16	03202	Plastic Knob	1
17	01021	Rear Wheel Assembly	2
18	02004	Nut - 5/16"-18, Nylon Insert	10
19	02005	Washer - 5/16", Flat SAE	8
20	02002	Bolt - 5/16"-18 x 1" HHC	10
21	01019	Bolt - 1/4" -20 x 1-1/2" HHC	12
22	02066	Nut - 1/4"-20, Nylon Insert	12
23	02024	Washer - 3/8", Flat SAE	5
24	01018	Bolt - 3/8"-16 x 1" – Special with Grease Fitting	1
25	06037	Washer - 3/4", Flat SAE	2
26	11288	Cotter Pin - 1/8" x 1-1/4"	4
27	01028	J – Bolt - 1/4"-20	1
28	03024	Nut - 1/2" – 13, Nylon Insert	2
29	03032	Washer - 1/2", Flat SAE	2
30	03016	Bolt - 3/8"-16 x 1" HHC	1
31	02030	Grease Fitting	2
32	01020	Plug – Cam Lock Hole	1
33	01022	Bearing – 3/4	2
34	01017	Nut, Push	1
35	01023	Roller – Plain	1
36	01030	Bars	2
37	01031	Spacer	1
38	01032	Roller – Paint Saver	1
39	01033	Bolt – 3/8"-16" HHC	1
40	03049	Washer – 3/8" Lock	2
41	02082	Grip - Handle	2

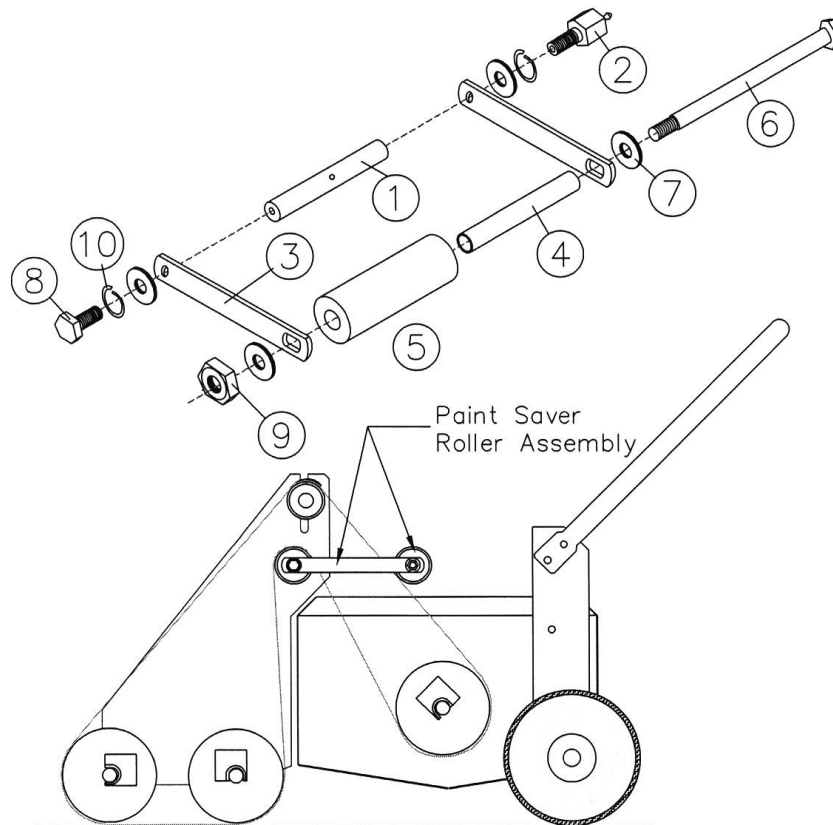
**GORDON BANNERMAN LIMITED**

41 Kelfield Street, Rexdale, ON M9W 5A3 Canada

T: (416) 247-7875 F: (416) 247-6540

[www.sportsturfmagic.com](http://www.sportsturfmagic.com)

## Paint Saver Roller Assembly



**Note:** Once belt has been installed and secured around all rollers, loosen mounting bars and carefully adjust the Paint Saver Roller to make full contact across the belt. Do not over-tighten belt or paint saver attachment.

Paint Saver Roller Assembly			
#	Part #	Description	Qty
1	01007	Axle, Wheel	1
2	01018	Bolt, 3/8"-16x1", Special With Grease Fitting	1
3	01030	Bars	2
4	01031	Spacer	1
5	01032	Roller, Paint Saver	1
6	01033	Bolt, 3/8"-16x6"	1
7	02024	3/8" Washer, Flat SAE	4
8	03016	Bolt, 3/8"-16x1"	1
9	03022	Nut, 3/8"-16 Nylon Insert	1
10	03049	3/8" Washer, Lock	2

### GORDON BANNERMAN LIMITED

41 Kelfield Street, Rexdale, ON M9W 5A3 Canada

T: (416) 247-7875 F: (416) 247-6540

[www.sportsturfmagic.com](http://www.sportsturfmagic.com)



A Division of Gordon Bannerman Limited

*"The Home of Sportsturf Magic"*

Scan the QR code below to visit our website



Or visit [www.sportsturfmagic.com](http://www.sportsturfmagic.com)

For any Questions, Customer Support or General Inquiries, please email [info@sportsturfmagic.com](mailto:info@sportsturfmagic.com)

**GORDON BANNERMAN LIMITED**

41 Kelfield Street, Rexdale, ON M9W 5A3 Canada

T: (416) 247-7875 F: (416) 247-6540

[www.sportsturfmagic.com](http://www.sportsturfmagic.com)