



INFIELD CHALKER

Model: B-LC-1234

Operation & Parts Manual

Table of Contents

Cover Page	1
Table of Contents	2
Welcome to Bannerman	3
Warranty Statement	4
Machine Description and Specifications	5
Working Safely and Operating Instructions	6
Maintenance	7
Parts Illustration	8
Parts List	9
Contact Information	10

GORDON BANNERMAN LIMITED

41 Kelfield Street, Rexdale, ON M9W 5A3 Canada

T: (416) 247-7875 F: (416) 247-6540

www.sportsturfmagic.com

Bannerman Infield Chalker

Model: B-LC-1234

Dear Owner,

Welcome to Bannerman, the Home of Sports Turf Magic.

Your new **B-LC-1234 Infield Chalker** is designed to meet, and exceed your infield lining requirements. The ease of operation and low maintenance will give you many trouble free years of use. Please make sure that you read and understand the important instructions for the assembly, adjustment, operations, safety, and maintenance contained in this manual. If there are any instructions which you do not fully understand, contact your dealer or Bannerman Ltd. for clarification before using the unit.

When in need of replacement parts, specify the model and the serial number of your **B-LC-1234 Infield Chalker**. The serial plate that identifies your model number and the serial number is located between the rear wheels on the bottom chassis. To give you many years of service, regular preventative maintenance is required. Should you need any further assistance, please feel free to contact your local Bannerman dealer or Bannerman directly.

Regards,



George Bannerman
Corporate Secretary

GORDON BANNERMAN LIMITED

41 Kelfield Street, Rexdale, ON M9W 5A3 Canada
T: (416) 247-7875 F: (416) 247-6540
www.sportsturfmagic.com

Warranty Statement

Bannerman Ltd warranties all **B-LC-1234 Infield Chalkers**, when appropriately applied and installed, to be free from defects in material and workmanship under normal use and service, for 1 year from the date of use. We must receive the Warranty Card, and Declaration or Delivery Card filled out in its entirety, via mail, fax, or email within 15 days of the date of sale. It is the responsibility of the end user to make sure that the Warranty Card is filled out and submitted to **Bannerman Ltd**. This warranty does not guarantee a particular service life of the products. Service life will vary with application, operating environment, level of maintenance and other factors beyond our control.

Bannerman Ltd's sole responsibility for the **B-LC-1234 Infield Chalker**, or parts determined to be defective and covered by this warranty, is limited to repairing the product or part. *An allowance is to be applied to the labour cost for the removal and replacement.*

Prior authorization from **Bannerman Ltd** must be obtained before replacing or returning any part(s) or incurring any cost of labour. No charges for expenses incurred for parts, labour or transportation, by unauthorized persons, will be allowed under this warranty. **Bannerman Ltd** reserves the right to any part or Bannerman assembly (with transportation prepaid) claimed to be covered under this warranty.

Bannerman Ltd shall not be liable, in the event of proximate, incidental, consequential, special or other damages. This includes, but is not limited to, damages for loss of production, loss of profit, loss of opportunity, or injury to persons arising out of any breach of this warranty.

THERE ARE NO WARRANTIES, EXPRESSED OR IMPLIED, INCLUDING THE WARRANTY OF MERCHANTABILITY, WARRANTY OF FITNESS FOR PARTICULAR PURPOSE, OR ANY OTHER WARRANTY EXTENDING BEYOND THAT SET FORTH ABOVE.

GORDON BANNERMAN LIMITED

41 Kelfield Street, Rexdale,
Ontario, Canada, M9W 5A3

CONTACT US:

CAN 1-800-325-4871

USA 1-800-665-2696

info@sportsturmagic.com

GORDON BANNERMAN LIMITED

41 Kelfield Street, Rexdale, ON M9W 5A3 Canada

T: (416) 247-7875 F: (416) 247-6540

www.sportsturmagic.com

Bannerman Infield Chalker

Model: B-LC-1234

Description

Operating Principle: The **Bannerman Infield Chalker** applies powdered line marking materials to non-turf surface and grass areas. As the chalker is pushed forward, the marking material is carried from the bottom of the hopper by a reciprocating plate through a variable front opening aperture, and is discharged into a chute outlet of adjustable width.

The hopper has an adjustable dispensing aperture positioned close to the ground to minimize drift and is equipped with a steel lid to protect the chalk from wind and rain. The width of the line is adjustable from 1" (26mm) to 4" (102mm). For extra stability and ease of handling the Infield Chalker is equipped with 4 pneumatic wheels and pneumatic tires. The front wheels are extra-large to ensure a uniform and easy drive for the dispensing mechanism when fully loaded. To stop the dispensing action you simply release the operator presence control and raise the operator presence control and the front wheels so there is no traction.

Specifications

Length (w/o handle)	26 inches	66.04 cm
Width (w/o handle)	24 inches	60.96 cm
Height (w/o handle)	24 ¾ inches	60.32 cm
Width (w/ handle)	24 inches	60.96 cm
Height (w/ handle)	36 ½ inches	92.71 cm
Shipping Weight	100 lbs.	45.36 Kg
Hopper Capacity	50 lbs.	22.68 Kg
Hopper Dimensions	12 ½" X 14 ½" X 17"	31.75 X 36.83 X 43.18 cm
Handle	Roll Around handle	
Tires - Front	13 X 5.00 -6	
Tires – Rear	4.10/3.5-4	
Line Widths	1", 2", 3" and 4"	25mm, 51mm, 76mm, 102mm

GORDON BANNERMAN LIMITED

41 Kelfield Street, Rexdale, ON M9W 5A3 Canada

T: (416) 247-7875 F: (416) 247-6540

www.sportsturfmagic.com

Work Safely - Follow These Rules!

-A careful operator is the best insurance against an accident-



Warning: Read this operation manual carefully and understand the controls before handling any equipment or commencing work.

- Before and during operation the area should be checked to assure that the area is clear of obstacles, hazards and personnel.
- Caution should be exercised when operating close to ditches, fences or on hill sides.
- Hands, feet, clothing and other objects must be kept away from all moving parts.
- Use extreme care when making adjustments.
- Always use the proper tools or equipment for the job at hand.
- Before starting work, visually check machines for damage or wear to working parts.
- Do not allow any unauthorized person to handle machines at any time.

Operating the Infield Chalker

We want you to obtain the best performance from your new Bannerman Infield Chalker. If you have any difficulty in carrying out the following instructions please contact us or your local representative or dealer.

To operate the chalker:

1. Adjust the position of the handle to suit the operator's height.
2. Remove the hopper cover, fill the hopper, and replace the hopper cover.
3. To adjust the rate of material dropping to the turf, first set the opening of the flow plate (Ref. #5) by relocating the hook end of the cable to the next hole in the cable bar link (#23). These holes affect the flow plate opening in ¼ inch increments.
4. To set the desired width of line; gently pull back on the adjustment lever (#9) and move lever to the correct hole. The hole at the top of the index plate will open the shutters to a 1 inch width, the 2nd hole to 2", the 3rd to 3", and the 4th hole to a 4" width.
5. When all adjustments have been made, push the chalker forward at a steady walking pace. The handle on the cover provides a visual reference for following the correct line.

To transport the marker over short distances, tilt the handle down at the back until the drive wheels are clear of the ground, and push the marker forward on the rear wheels.

When transporting over a long distance, unlock the hand knobs (#29) and unwind the knob clockwise onto the shaft until the striker bar (item #13) clears the cams allowing the front wheels to freewheel. On site, unwind the hand wheel again to engage the cams.

GORDON BANNERMAN LIMITED

41 Kelfield Street, Rexdale, ON M9W 5A3 Canada

T: (416) 247-7875 F: (416) 247-6540

www.sportsturfmagic.com

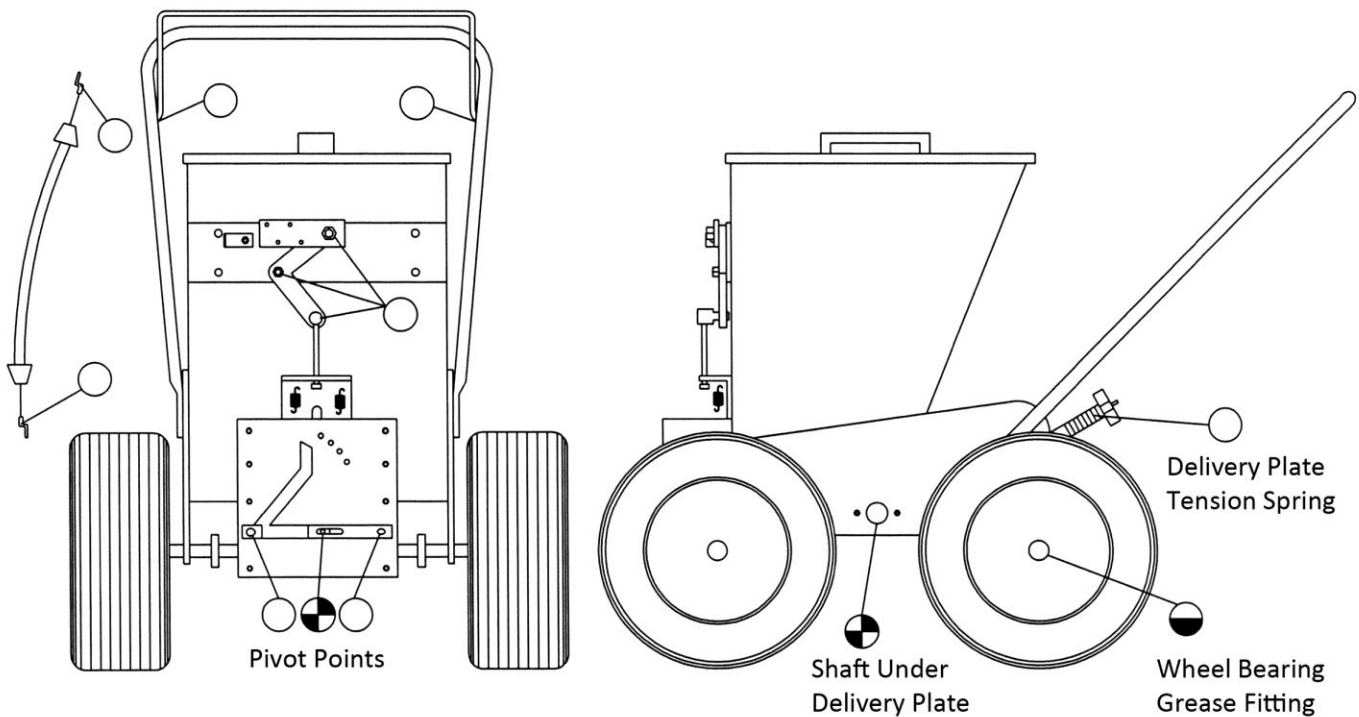
Maintenance

- During use, always keep the hopper cover in place to prevent the chalking material from becoming damp.
- After use, always empty the chalking material from the hopper. Push the chalker forward to clear the bottom plate and outlet of chalking material.
- The importance of a thoroughly cleaning of the machine after use cannot be overstressed. This will avoid any potential delays and frustration during use.
- When the chalker is cleaned, lubricate all the points as show on the diagram.



Lubrication Chart

- Grease Regularly
- ◐ Grease Periodically
- Oil Periodically



GORDON BANNERMAN LIMITED

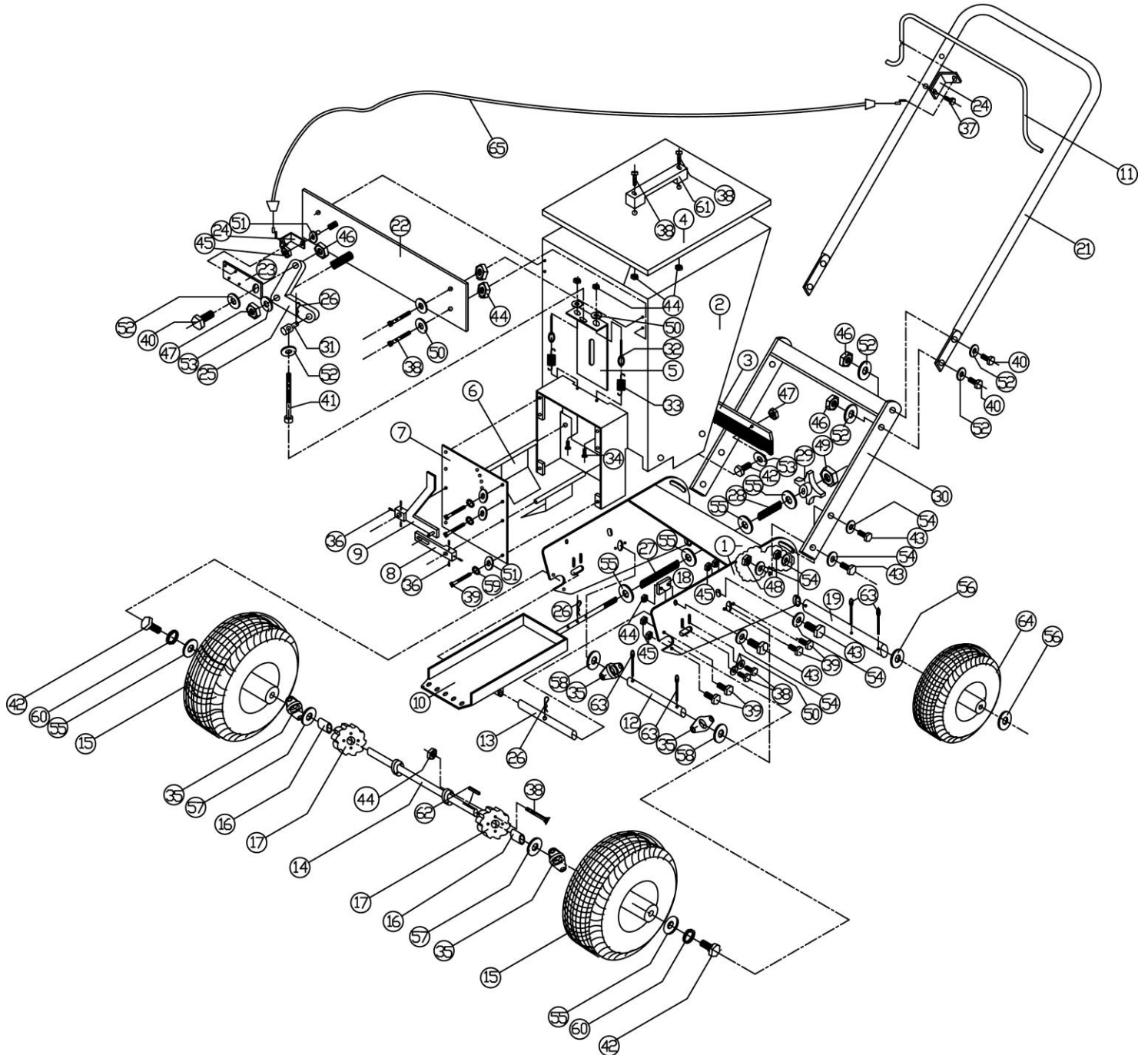
41 Kelfield Street, Rexdale, ON M9W 5A3 Canada

T: (416) 247-7875 F: (416) 247-6540

www.sportsturfmagic.com

B-LC-1234 Infield Chalker

Parts Diagram



GORDON BANNERMAN LIMITED

41 Kelfield Street, Rexdale, ON M9W 5A3 Canada

T: (416) 247-7875 F: (416) 247-6540

www.sportsturfmagic.com

B-LC-1234 Infield Chalker

Parts List

Item #	Part #	Description	Qty.
1	01201	Chassis	1
2	01202	Hopper	1
3	01203	Strip, Brush	1
4	01204	Lid	1
5	01205	Flow plate	1
6	01206	Shutters	2
7	01207	Index Plate	1
8	01208	Connecting Link	1
9	01209	Adjustment Lever	1
10	01210	Delivery Plate	1
11	01211	Handle, Bail	1
12	01212	Rolling Shaft	1
13	01213	Striker Rod	1
14	01214	Cam Drive shaft	1
15	01215	Wheels - Drive	2
16	01216	Spacer – Front Wheel	2
17	01217	Cam	2
18	01218	Block - Rubbing	2
19	01219	Axle - Rear	1
21	01221	Upper Handle	1
22	01222	Plate - Lever & Cable	1
23	01223	Cable Link Bar	1
24	01226	Bracket - Cable	2
25	01225	Lever - 90° Pivot	1
26	08174	Pin - Hitch	1
27	01227	Spring - Compression 4 1/2"	1
28	01228	Spring – Light Compression	1
29	01229	Knob - Hand	1
30	01224	Handle - Lower	1
31	01231	5/16-18 Swivel	1
32	01232	Bolt - 10-24 Eye	2
33	01233	Extension Spring	2
34	01234	Clevis - Pin 1/4X1/2	2

Item #	Part #	Description	Qty.
35	01235	Bearing - Cam & Roller	4
36	01239	Set Screw - 1/4-20X1/4	6
37	11232	10-16X5/8 Self Tapping Screw	1
38	03002	Bolt - 10-24X1/2	18
39	03013	Bolt - 1/4-20X3/4	16
40	02002	Bolt - 5/16-18X1	5
41	03053	Bolt - 5/16-18X2.75	1
42	03026	Bolt - 3/8-16X1.5	4
43	00537	Bolt - 7/16-14X1.5	8
44	02048	Nylock - 10-24	20
45	02066	Nylock - 1/4-20	9
46	02004	Nylock - 5/16-18	5
47	03022	Nylock - 3/8-16	3
48	15047	Nylock - 7/16-14	8
49	03073	Jam Nut - 1/2-13	1
50	01237	Flat Washer - #10	10
51	03007	Flat Washer - 1/4	7
52	02005	Flat Washer - 5/16	9
53	02024	Flat Washer - 3/8	3
54	09016	Flat Washer - 7/16	12
55	03032	Flat Washer - 1/2	6
56	04037	Flat Washer - 5/8	4
57	06037	Flat Washer - 3/4	2
58	08034	Flat Washer - 3/4	2
59	02056	Lock Washer- 1/4	6
60	03049	Lock Washer - 3/8	2
61	14118	Grab Handle	1
62	03045	Key - 3/16X3/16X1.25	1
63	00811	Cotter Pin	6
64	01236	Rear Wheel	2
65	01911	Cable	1
66	04041	Bearing - 5/8" Wheel	4
67	01238	Screw – Flathead 10/24x1	8

GORDON BANNERMAN LIMITED

41 Kelfield Street, Rexdale, ON M9W 5A3 Canada

T: (416) 247-7875 F: (416) 247-6540

www.sportsturfmagic.com



A Division of Gordon Bannerman Limited

“The Home of Sportsturf Magic”

Scan the QR code below to visit our website



Or visit www.sportsturfmagic.com

For any Questions, Customer Support or General Inquiries, please email info@sportsturfmagic.com

GORDON BANNERMAN LIMITED

41 Kelfield Street, Rexdale, ON M9W 5A3 Canada

T: (416) 247-7875 F: (416) 247-6540

www.sportsturfmagic.com