



**Ballpark-4 Groomer**  
**Model No.: B-BP-4**  
**Operation & Parts Manual**

**GORDON BANNERMAN LIMITED**  
41 Kelfield Street, Rexdale, ON M9W 5A3 Canada  
T: (416) 247-7875 F: (416) 247-6540  
[www.sportsturfmagic.com](http://www.sportsturfmagic.com)

## Table of Contents

Cover Page	1
Table of Contents	2
Welcome to Bannerman	3
Warranty	4
General Information & Tool Functions	5
How to Use, Tool Adjustments & Basic Maintenance	6
Three-Point Hitch Attachment Procedure	7
Parts Manual Cover Page	8
Main Frame Assembly	9
Ripper Blade Assembly	10
Rake Assembly	11
Leveler Assembly	12
Roller & Scraper Assembly Diagram	13
Roller & Scraper Parts Breakdown	14
Brush Assembly Diagram	15
Brush Assembly Parts Breakdown	16
Swing-Away Wing Brush Kit Diagram	17
Swing-Away Wing Brush Kit Parts Breakdown & Installation	18
Hydraulic Top Link	19
Water Tank Kit Diagram	20
Water Tank Kit Parts Breakdown	21
Contact Information	22

### **GORDON BANNERMAN LIMITED**

41 Kelfield Street, Rexdale, ON M9W 5A3 Canada

T: (416) 247-7875 F: (416) 247-6540

[www.sportsturfmagic.com](http://www.sportsturfmagic.com)

## Ballpark-4 Groomer (B-BP-4)

Dear Owner,

Welcome to Bannerman, the Home of Sports Turf Magic.

Your new **B-BP-4 Ballpark 4® Groomer** is designed to meet all of your diamond grooming requirements. The ease of operation and low maintenance will give you many trouble free years of use. Please make sure that you read and understand the important instructions for the assembly, adjustment, operations, safety, and maintenance contained in this manual. If there are any instructions which you do not fully understand, contact either your dealer or Bannerman Ltd. for clarification prior to using the unit.

When in need of replacement parts, specify the model and the serial number of your **new B-BP-4 Ballpark 4-Groomer**. The serial plate that identifies your model number and the serial number is located on the three-point hitch mast. To give you many years of service, regular preventative maintenance is required. Should you require further assistance, please feel free to contact your local Bannerman dealer or Bannerman directly.

Regards,



George Bannerman  
Corporate Secretary

**GORDON BANNERMAN LIMITED**

41 Kelfield Street, Rexdale, ON M9W 5A3 Canada

T: (416) 247-7875 F: (416) 247-6540

[www.sportsturfmagic.com](http://www.sportsturfmagic.com)

## Warranty

**Bannerman Ltd.** warranties all **B-BP-4 Ballpark 4® Groomers**, when applied and installed, to be free from defects in material and workmanship under normal use and service for a period of 1 year from date of use. We must receive the Warranty Card, and the Declaration or Delivery Card filled out in its entirety, via post, fax, or email within 15 days of the date of sale. It is the responsibility of the end user to make sure that the Warranty Card has been filled out and submitted to Bannerman Ltd. This warranty does not guarantee a particular service life of the products. Service life will vary with application, operating environment, level of maintenance and other factors beyond our control.

**Bannerman Ltd's** sole responsibilities for the **B-BP-4 Ballpark 4® Groomer** or parts determined to be defective and covered by this warranty is limited to repairing the product or part. \*An allowance is to be applied to the labour cost for the removal and replacement.\*

Prior authorization from **Bannerman Ltd.** must be obtained before replacing or returning any parts or incurring any cost of labour. No charges for expenses incurred in parts, labour or transportation by unauthorized persons will be allowed under this warranty. **Bannerman Ltd.** reserves the right of any part or Bannerman assembly (with transportation prepaid) claimed to be covered under this warranty.

**Bannerman Ltd.** shall not be liable, in the event, for proximate, incidental, consequential, special or other damages. This includes, but is not limited to, damages for loss of production, loss of profit, loss of opportunity, or injury to persons arising out of any breach in this warranty.

**THERE ARE NO WARRANTIES, EXPRESSED OR IMPLIED, INCLUDING THE WARRANTY OF MERCHANTABILITY, WARRANTY OF FITNESS FOR PARTICULAR PURPOSE, OR ANY OTHER WARRANTY EXTENDING BEYOND THAT SET FORTH ABOVE.**

### **GORDON BANNERMAN LIMITED**

41 Kelfield Street, Rexdale, M9W 5A3  
Ontario, Canada

### **CONTACT US:**

**CAN 1-800-325-4871**

**USA 1-800-665-2696**

**info@sportsturfmagic.com**

### **GORDON BANNERMAN LIMITED**

41 Kelfield Street, Rexdale, ON M9W 5A3 Canada

T: (416) 247-7875 F: (416) 247-6540

[www.sportsturfmagic.com](http://www.sportsturfmagic.com)

# Bannerman Ballpark-4

## Leveler and Surface Restorer

The **Ballpark-4®** can give your community ball diamonds as surface just like the professional teams demand – and reduce the time, effort and labour to do the job. With the Ballpark-4, once you get your diamonds into shape, it is simply a matter of redressing the surface before and after every game (or even between innings). You will be able to keep your diamonds in top-notch shape throughout the entire season with much less effort when compared to other methods.

### General Information

**Tractor Requirements:** 17-35 horsepower  
tractor with Category 1 Three-Point Hitch  
**Speed of Operation:** 3 to 4 mph. (5 to 6 k/h.)  
**Route of Operation:** Forward direction only.  
Straight lines and turning permitted.

**Length:** 48 in. (120cm)  
**Width:** 48 in. (120cm)  
**Height:** 31 in. (77.5cm)  
**Weight:** 450 lbs. (202.5kg)

### Tool Functions

There are five tools that can be adjusted for the diamond conditions.

- Roller Assembly:** Packs the material down for a firm finish. The roller is also the reference position of all tools. The roller height should be set first and then locked into place. Adjusting the roller last will affect the other tools.
- Ripper Blade:** Breaks up any mounding or highly compacted areas. Can be used to move large amounts of materials from high areas to low areas. Speed should be reduced when there is an increased amount of material.
- Rake Assembly:** Breaks up any lumps and initiates the grooming process. Aside from vertical adjustment, the wire tine head has three positions for ground contact angle.
- Leveler Assembly:** Material loosened by the ripper blade and rake is leveled using a dual blade mounted on a parallel linkage system. This ensures a smooth and level playing field.
- Brush Assembly:** Applies the final cosmetic appearance. Adjusting brush pressure changes the final appearance of the infield.

#### GORDON BANNERMAN LIMITED

41 Kelfield Street, Rexdale, ON M9W 5A3 Canada  
T: (416) 247-7875 F: (416) 247-6540  
[www.sportsturfmagic.com](http://www.sportsturfmagic.com)

## How to Use the Ballpark-4

Approach the baseball diamond at a slow speed, approximately 3 to 5 m.p.h. Gently lower the groomer to the surface while on the move. Observe contact with the surface of the rake, leveler, roller, and brush. To quickly engage the ripper blade to a depth of ¼" to 3/8", stop the tractor, shut off the engine, climb off the tractor, shorten the top link approximately ¼ to ½ turn and re-lock. When back in the tractor seat, start the tractor and pull ahead, again observing the tools. All of the tools should be in contact with the surface.

## Tool Adjustments

**Note:** The roller must be the first tool adjusted when setting up the machine. This is due to the roller being the reference that all other tools are positioned from.

**Important:** All settings of the groomer are also dependent on the length of the top link of the tractor. If the length of the top link is changed, this will change the settings of all the tools.

The initial set-up of the groomer should have the three-point hitch at an angle of approximately 90 degrees to the tractor. If the groomer has previously been set up and you are re-attaching it to the tractor, the top link will have to be adjusted to its previous length.

A quick way to do this is to put the groomer down on a level surface, such as a parking lot or shop floor, and adjust the top link until the ripper blade is ½" to 5/8" (12mm X 16mm) off the ground. **Remember that this assumes that the machine was properly set up before its removal.**

## Basic Maintenance

### **Daily:**

**Leveler Assembly:** Oil all pivot points, eight in total.

**Whole Unit:** Walk around the groomer and visually check the frame and components for signs of wear or disfiguring. Any damaged part should be changed before operation.

### **Weekly:**

**Whole Unit:** Check that all the bolts are present and tight.

### **GORDON BANNERMAN LIMITED**

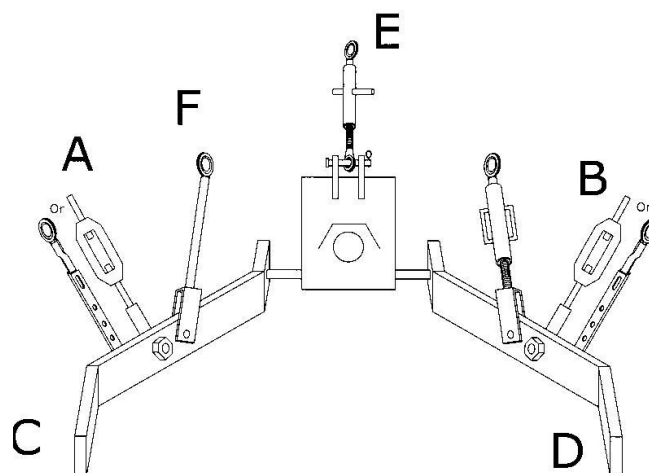
41 Kelfield Street, Rexdale, ON M9W 5A3 Canada

T: (416) 247-7875 F: (416) 247-6540

[www.sportsturfmagic.com](http://www.sportsturfmagic.com)

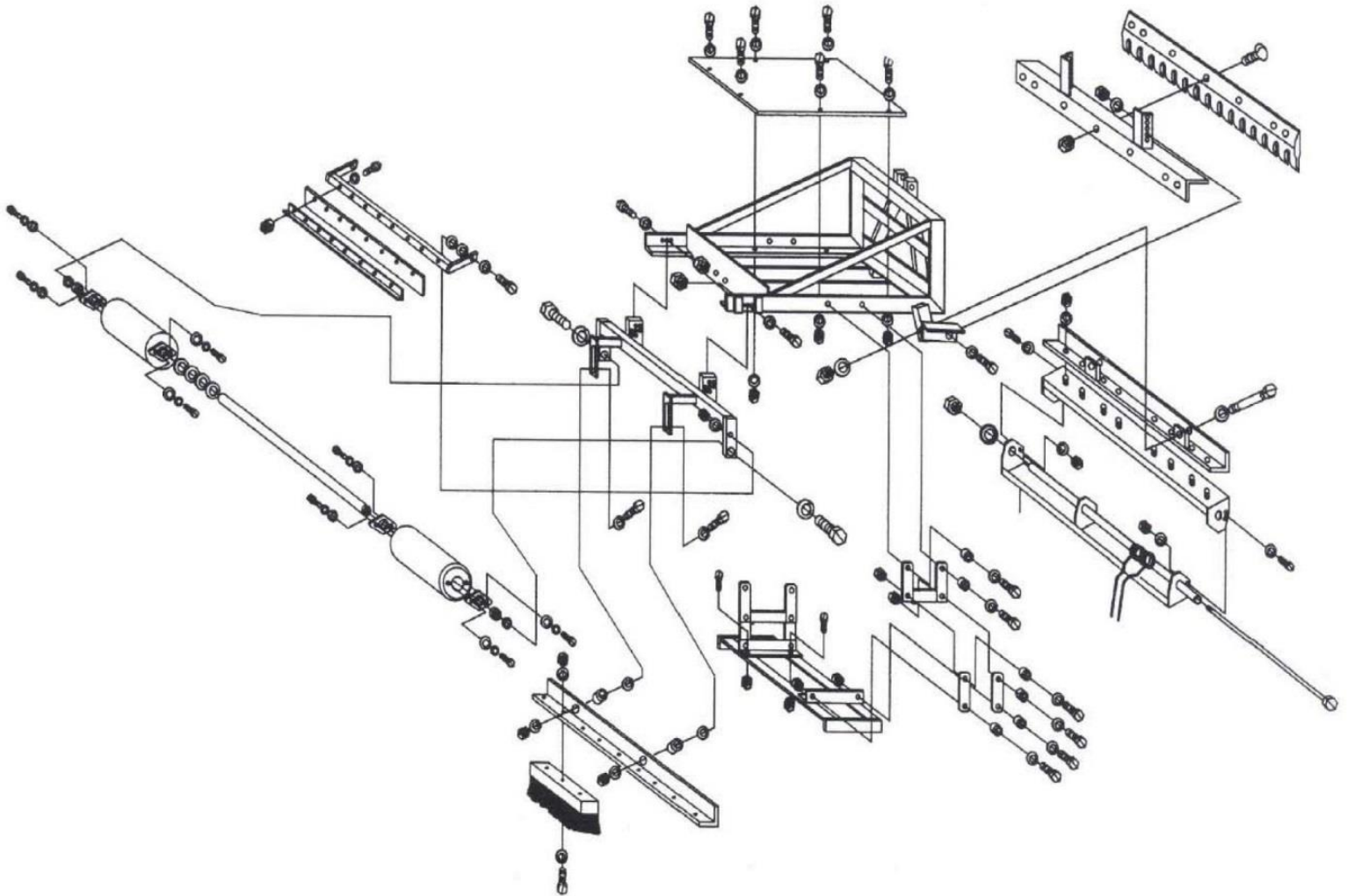
## Three-Point Hitch Attachment Procedure

1. Select a tractor 18 horsepower or greater equipped with the standard Category "0" or "1" three-point hitch.
2. Free up all linkages, pivot ball joints with adequate caution to ensure proper movement of the linkage. This also ensures hook up is faster and safer.
3. With both the tractor and groomer on a level, firm surface, first, measure the distance from the two rear three-point hitch arms "C" and "D" to the ground – with the arms in the lowest position, ground clearance should be no greater than 6" (15cm). Adjustments to the vertical tractor lift links "F" and "G" may be necessary.
4. Safely reverse the tractor to groomer, and turn off the tractor's engine. Connect the left-hand tractor hitch arm "C" onto the groomer hitch pin and locate the lynchpin into the pin hole.
5. Connect the right-hand tractor hitch arm "D" onto the groomer hitch pin and locate the lynchpin. Snap pin into the pin hole.
6. Connect the adjustable top link "E" to the tractor and the top hole in the "A" frame of the groomer. Be sure the lynchpins are in the cross holes of the top link pins, use hardened pins, NOT bolts. **NOTE:** Top link "E" can be either manually adjustable or hydraulic type. Start tractor engine, raise groomer to the height of 2 ft (60cm) off of the ground. Ensure parking brake is on before leaving the tractor seat. With the unit raised up, adjust "Side Sway" turnbuckles "A" & "B" to prevent "Side to Side" movement of the groomer. Be sure when adjusting side sway, to center the groomer to the tractor to ensure the groomer follows in a straight line of cultivation behind the tractor.
7. While the groomer is in a raised position, level the groomer horizontally to the rear axle of the tractor.
8. Safely and slowly lower the groomer to the ground. When the groomer is resting on the ground, adjust the tractor top link "E," either in or out to ensure the mainframe is 90 degrees to the rear of the tractor.
9. Lift the groomer for transport to approximately 18" (46 cm) of height and proceed to the baseball diamond infield surface to be groomed.



# Ballpark-4 Groomer

## Model No.: B-BP-4



## PARTS MANUAL

**GORDON BANNERMAN LIMITED**

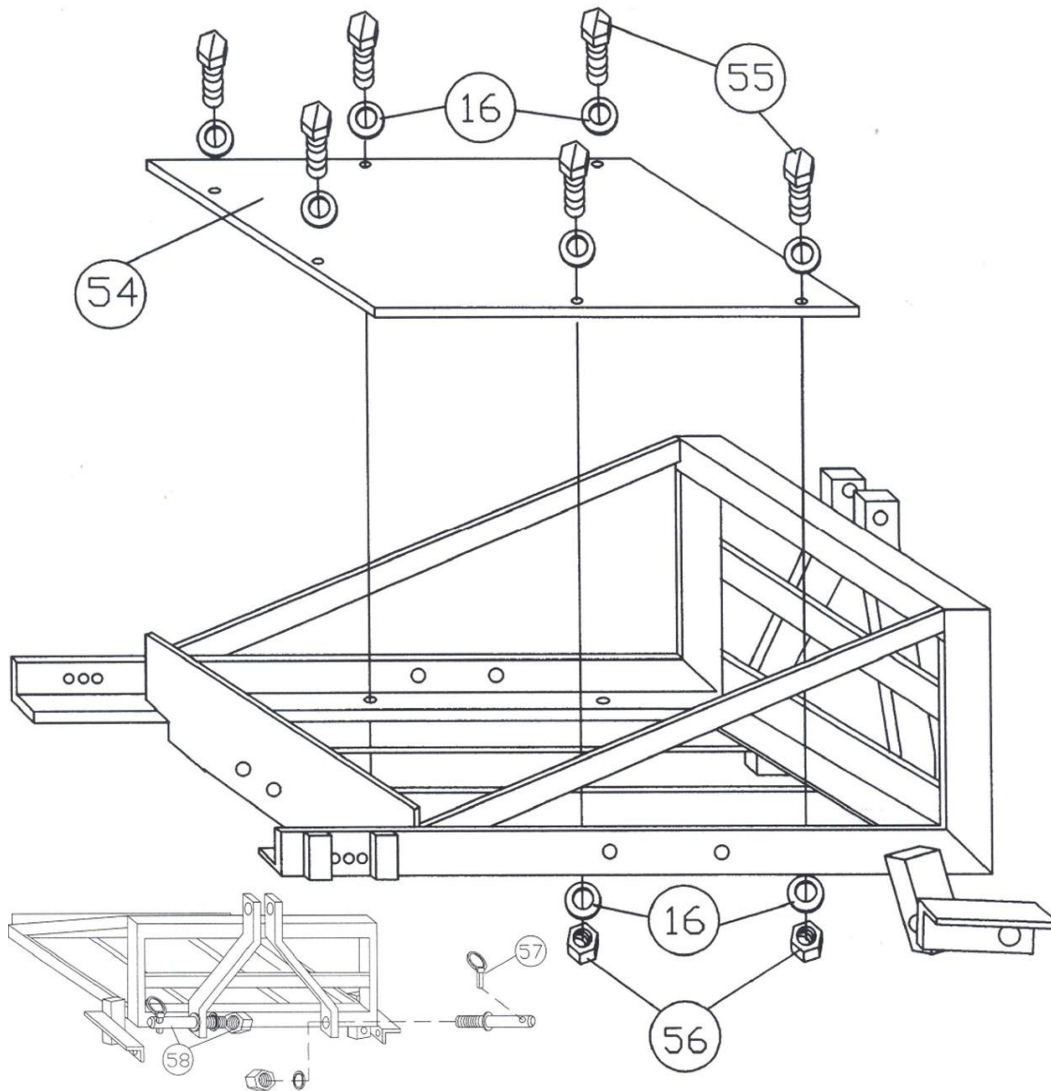
41 Kelfield Street, Rexdale, ON M9W 5A3 Canada

T: (416) 247-7875 F: (416) 247-6540

[www.sportsturfmagic.com](http://www.sportsturfmagic.com)



## Main Frame Assembly



Main Frame Assembly Parts List			
#	Part No.	Description	Qty.
16	02005	5/16" Washer, Flat	12
54	15023	Platform	1
55	02007	5/16" - 16 X 1 Hex Head Cap Screw	6
56	02004	5/16" Nut, Nylon Insert	6
57	15045	Pin, Lynch	2
58	15044	Pin, Hitch (includes nut & lock washer)	2

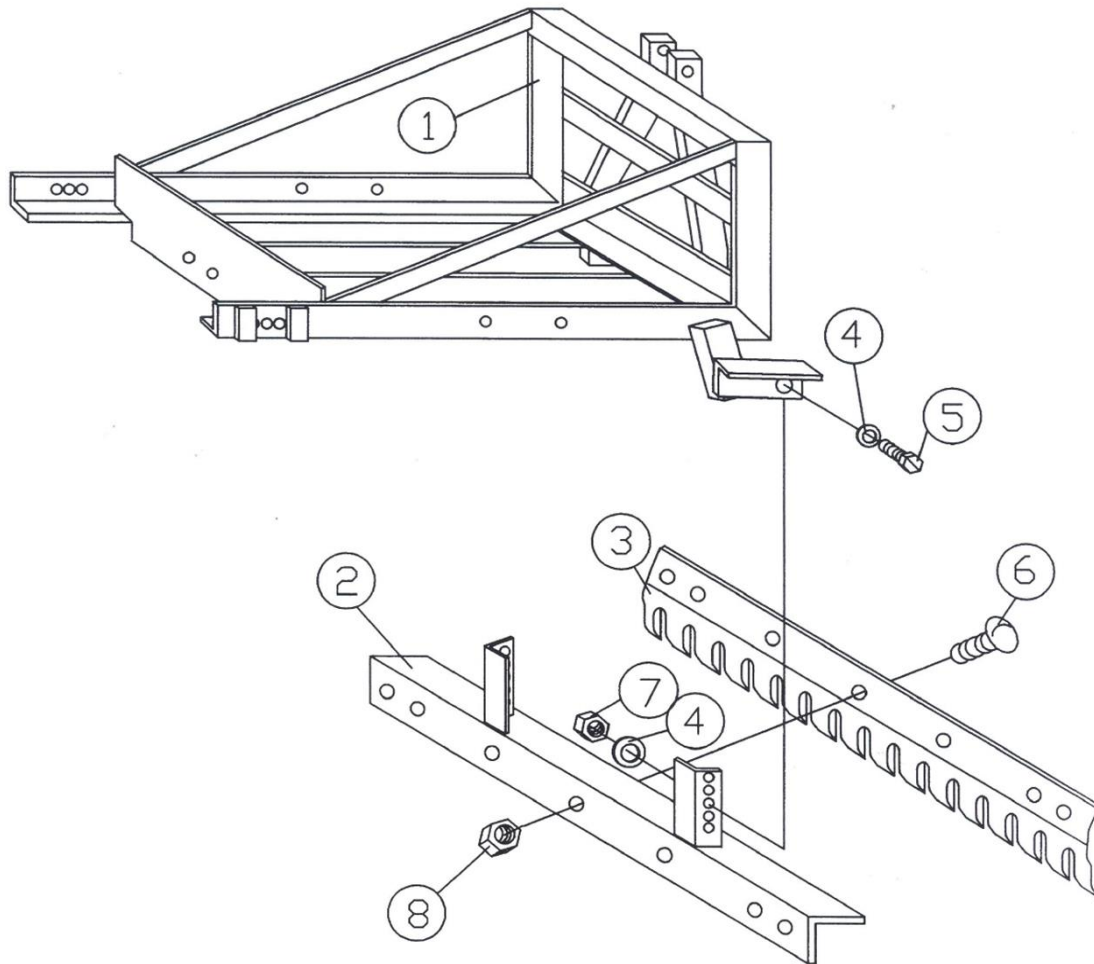
### GORDON BANNERMAN LIMITED

41 Kelfield Street, Rexdale, ON M9W 5A3 Canada

T: (416) 247-7875 F: (416) 247-6540

[www.sportsturfmagic.com](http://www.sportsturfmagic.com)

## Ripper Blade Assembly



Ripper Blade Assembly Parts List			
#	Part No.	Description	Qty.
1	15001	Frame - Main	1
2	15601	Frame - Ripper Blade	1
3	15615	Ripper Blade	1
4	03032	1/2" Washer, Flat	4
5	11225	1/2" - 13 X 1-3/4" Hex Head Cap Screw	2
6	15032	5/8" - 11 X 2" Blade Bolts	5
7	03024	1/2" Nut, Nylon Insert	2
8	15033	5/8" Nut, Running	5

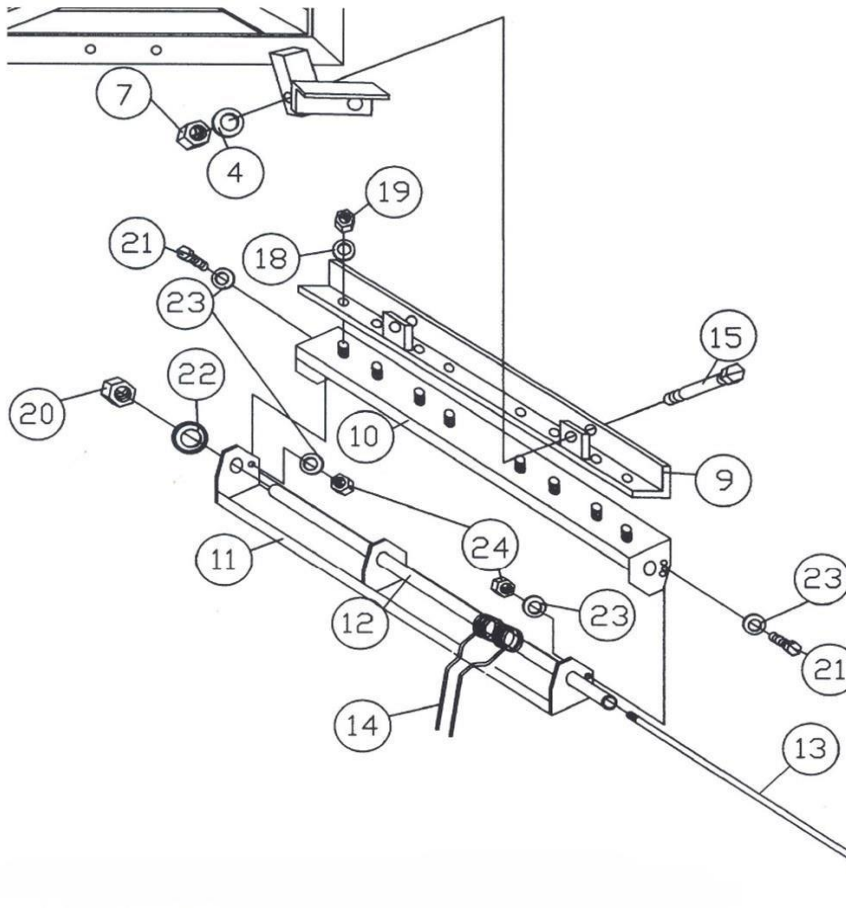
### GORDON BANNERMAN LIMITED

41 Kelfield Street, Rexdale, ON M9W 5A3 Canada

T: (416) 247-7875 F: (416) 247-6540

[www.sportsturfmagic.com](http://www.sportsturfmagic.com)

## Rake Assembly



#	Part No.	Description	Qty.
4	03032	1/2" Washer, Flat	2
7	03024	1/2" Nut, Nylon Insert	2
9	15604	Frame - Rake	1
10	15602	Frame - Top Rake	1
11	15603	Frame - Bottom Rake	1
12	15605	Tine Tube	1
13	15606	Stay Shaft	1
14	15028	Rake Tine	26
15	03020	1/2" - 13 X 3" Hex Head Cap Screw	2
18	09016	7/16" Washer, Flat	6
19	15047	7/16" Nut, Nylon Insert	6
20	15039	1/2" - 20 Nut, Jam	1
21	03016	3/8" - 16 X 1" Hex Head Cap Screw	2
22	15043	1/2" Washer, Shake Proof	1
23	02024	3/8" Washer, Flat	4
24	03022	3/8" Nut, Nylon Insert	2

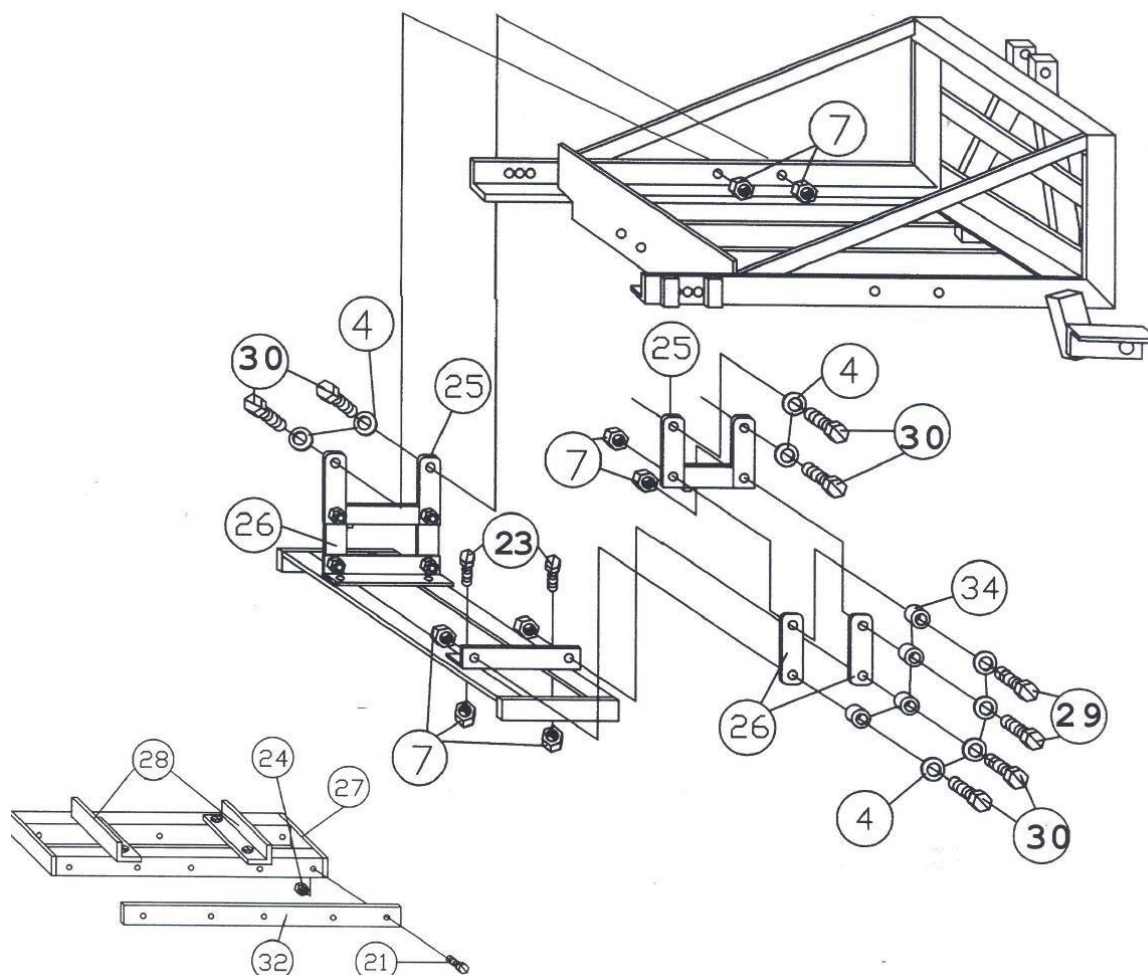
### GORDON BANNERMAN LIMITED

41 Kelfield Street, Rexdale, ON M9W 5A3 Canada

T: (416) 247-7875 F: (416) 247-6540

[www.sportsturfmagic.com](http://www.sportsturfmagic.com)

## Leveler Assembly



#	Part No.	Description	Qty.
4	03032	1/2" Washer, Flat	12
7	03024	1/2" Nut, Nylon Insert	16
21	03016	3/8" - 16 X 1" Hex Head Cap Screw	10
23	15113	1/2" - 13 X 1-1/4 Hex Head Cap Screw	4
24	03022	3/8" Nut, Nylon Insert	10
25	15008	Leveler Hanger Bar – Left-Hand	2
	15009	Leveler Hanger Bar - Right Hand	2
26	15010	Leveler Hanger Arm - Lower	4
27	15607	Frame - Leveler	1
28	15011	Leveler Pivot Bracket – Left-Hand	1
	15012	Leveler Pivot Bracket - Right Hand	1
29	11225	1/2" - 13 X 1-3/4" Hex Head Cap Screw	4
30	11218	1/2" - 13 X 1-1/2" Hex Head Cap Screw	4
32	15608	Leveler Blade	2
34	15034	1/2" I.D. Bushing	8

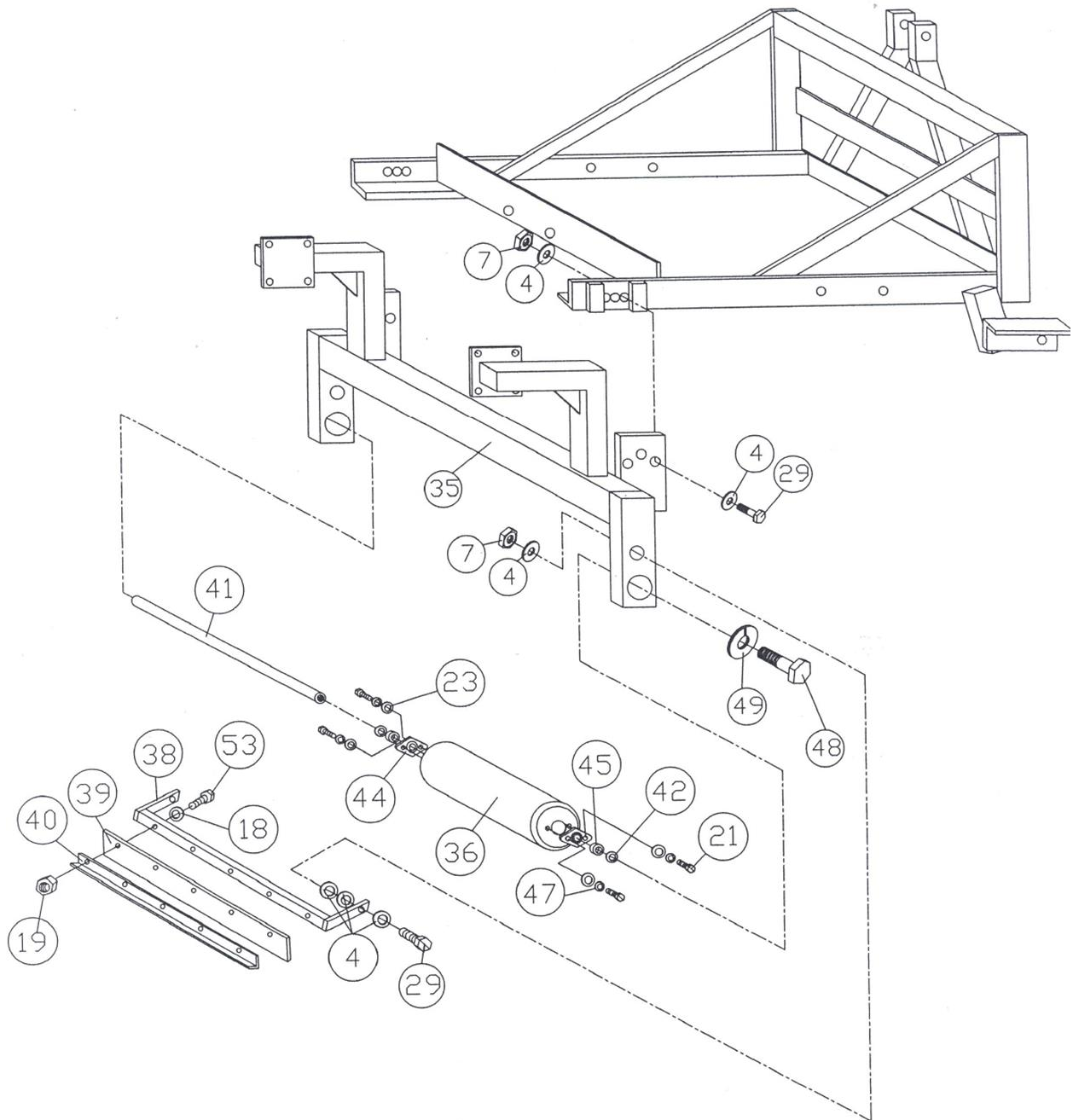
### GORDON BANNERMAN LIMITED

41 Kelfield Street, Rexdale, ON M9W 5A3 Canada

T: (416) 247-7875 F: (416) 247-6540

[www.sportsturfmagic.com](http://www.sportsturfmagic.com)

## Roller & Scraper Assembly



### GORDON BANNERMAN LIMITED

41 Kelfield Street, Rexdale, ON M9W 5A3 Canada

T: (416) 247-7875 F: (416) 247-6540

[www.sportsturfmagic.com](http://www.sportsturfmagic.com)

<b>Roller &amp; Scraper Assembly Parts List</b>			
<b>#</b>	<b>Part #</b>	<b>Description</b>	<b>Qty</b>
4	03032	1/2" Washer - Flat	12
7	03024	1/2"-13 Nut - Nylon Insert	4
18	02005	5/16" Washer - Flat	5
19	02004	5/16"-18 Nut - Nylon Insert	5
21	03016	3/8"-16 x 1" Hex Head Cap Screw	4
23	02024	3/8" Washer - Flat	4
29	11225	1/2"-13 x 1.75" Hex Head Cap Screw	2
35	15609	Frame – Roller (B-Bp-4)	1
36	08165	Roller	2
38	08166	Frame - Scraper	1
39	08167	Rubber Scraper	1
40	08168	Clamp - Scraper	1
41	08164	Shaft - Roller	1
42	15040	Spacer - Thin (Inner)	2
43	15048	Spacer - Thick (Inner)	2
44	15027	Bearing	2
45	15019	Collar - Outer	2
47	03049	3/8" Washer - Lock	4
48	15041	3/4"-10 x 2" Hex Head Cap Screw	2
49	15042	3/4" Washer - Lock	2
53	03057	5/16"-18 x 1.5" Hex Head Cap Screw	5

**GORDON BANNERMAN LIMITED**

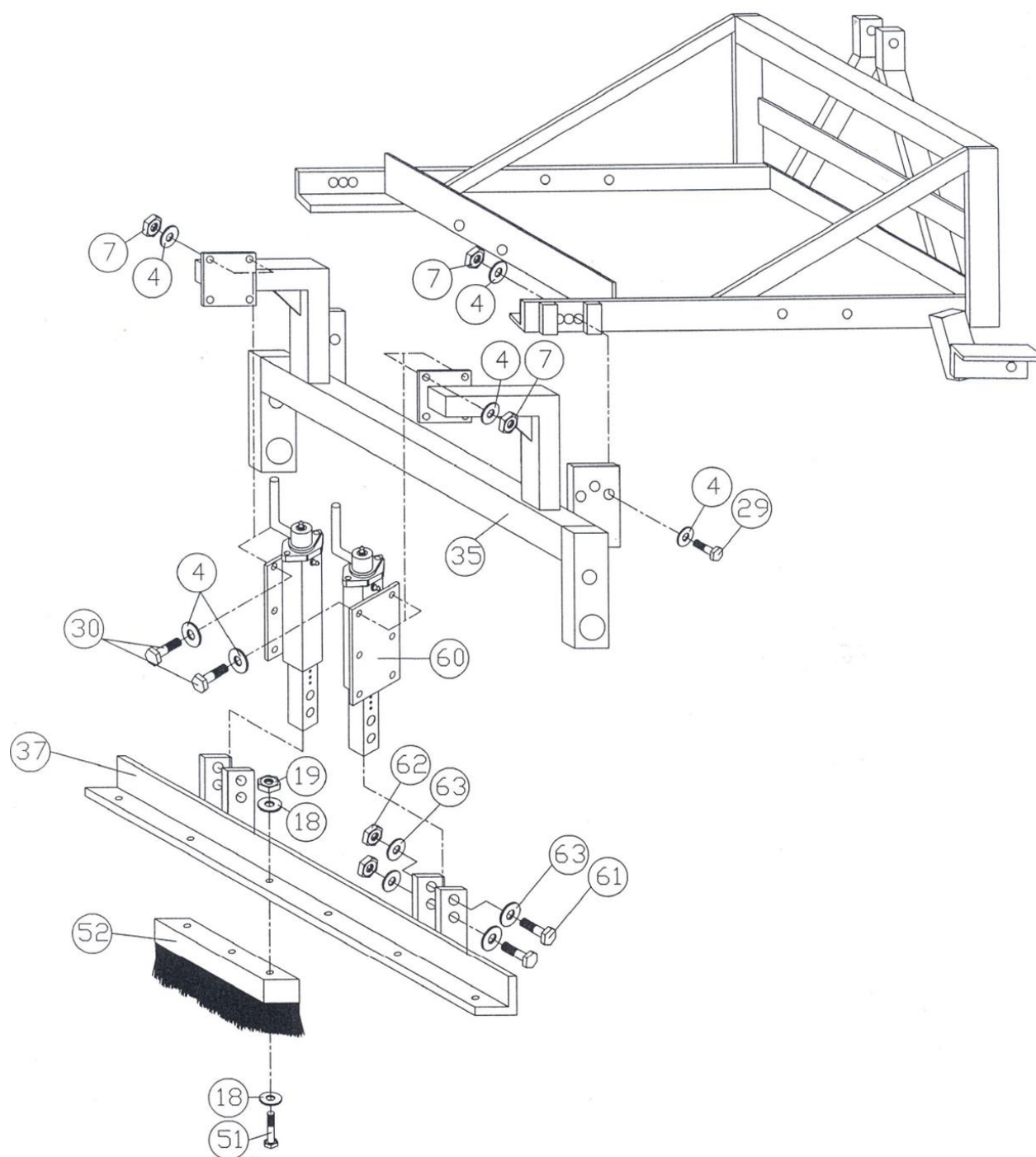
41 Kelfield Street, Rexdale, ON M9W 5A3 Canada

T: (416) 247-7875 F: (416) 247-6540

[www.sportsturfmagic.com](http://www.sportsturfmagic.com)



# Brush Assembly



## GORDON BANNERMAN LIMITED

41 Kelfield Street, Rexdale, ON M9W 5A3 Canada

T: (416) 247-7875 F: (416) 247-6540

[www.sportsturfmagic.com](http://www.sportsturfmagic.com)

<b>Brush Assembly Parts List</b>			
<b>#</b>	<b>Part #</b>	<b>Description</b>	<b>Qty</b>
4	03032	1/2" Washer - Flat	6
7	03024	1/2"-13 Nut - Nylon Insert	2
18	02024	3/8" Washer - Flat	18
19	03022	3/8"-16 Nut Nylon Insert	9
29	11225	1/2"-13 x 1.75" Hex Head Cap Screw	2
30	11218	1/2"-13 x 1.5" Hex Head Cap Screw	8
35	15609	Frame – Roller (B-BP-4)	1
37	15610	Frame - Brush	1
51	11211	3/8"-16 x 3" Hex Head Cap Screw	6
52	15030	Brush	2
60	15103	Screw Jack Assembly	2
61	15111	5/8"-11 x 3" Hex Head Cap Screw	4
62	09024	5/8"-11 Nut - Nylon Insert	4
63	04037	5/8" Washer - Flat	8

**GORDON BANNERMAN LIMITED**

41 Kelfield Street, Rexdale, ON M9W 5A3 Canada

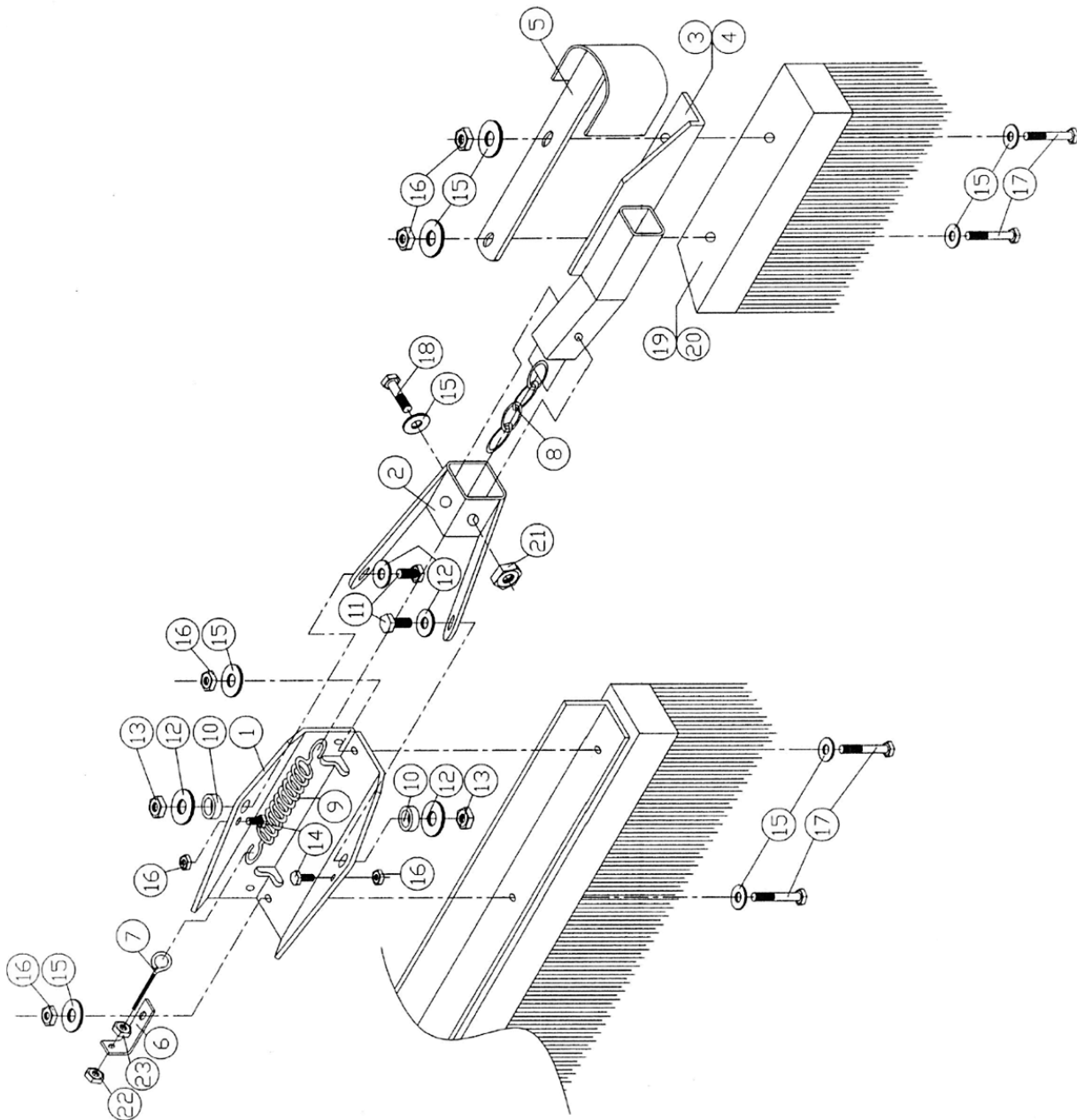
T: (416) 247-7875 F: (416) 247-6540

[www.sportsturfmagic.com](http://www.sportsturfmagic.com)



## OPTIONAL EQUIPMENT

### Swing-Away Wing Brush Kit



#### GORDON BANNERMAN LIMITED

41 Kelfield Street, Rexdale, ON M9W 5A3 Canada

T: (416) 247-7875 F: (416) 247-6540

[www.sportsturfmagic.com](http://www.sportsturfmagic.com)

<b>Swing-Away Wing Brush Kit</b>			
<b>#</b>	<b>Part #</b>	<b>Description</b>	<b>Qty</b>
1	15120	Brush Plate	2
2	15121	Pivot Plate	2
3	15061	Brush Bracket (L)	1
4	15059	Brush Bracket (R )	1
5	15122	Nose Guard	2
6	15123	Eye Bolt Bracket	2
7	03064	Eye Bolt Bracket 5/16x3	2
8	15124	Chain 4 Link	2
9	15125	Spring - W.B.	2
10	15034	Bushing, 1/2" ID	4
11	11218	Bolt - 1/2"-13 x 1.5" HHC	4
12	03032	Washer 1/2" SAE	8
13	03024	Nut, Nylon Insert 1/2"-13	4
14	03016	Bolt, 3/8"-18 x 1" HHC	4
15	02024	Washer - 3/8" SAE	20
16	03022	Nut, Nylon Insert 3/8"-16	12
17	11212	Bolt, 3/8"-18 x 3.25" HHC	8
18	11210	Bolt, 3/8"-18 x 2.5" HHC	2
19	15053	Brush (R )	1
20	15057	Brush (L)	1
21	03062	Nut, Jam 3/8"-16	1
22	02004	Nut, Nylon Insert 5/16"-18	2
23	08078	Nut, Free Running 5/16"-18	2

## Installation for the Ballpark 4 & Ballpark 6

1. Attach the brush plate (Item 1) to the brush frame, including the eye bolt bracket (Item 6) and the eye bolt (Item 7)
2. Attach the nose guard (Item 5) brush bracket (Item 3 or 4) and brush (Item 19 or 20).  
DO NOT TIGHTEN.
3. Attach the pivot arm (Item 2) to the brush plate.
4. Push the brush brackets through the pivot arm. Slide the bolt with the washer (Item 18) through the arm, brush bracket, and chain link (Item 8).
5. Put the wing brush arm in the operational position and make it level with the main brush, push towards the main brush and tighten in this position.
6. Finally, attach the spring (Item 9) to the eye bolt (Item 7) and then to the chain.  
The arm should move freely in and out of position, under spring tension.

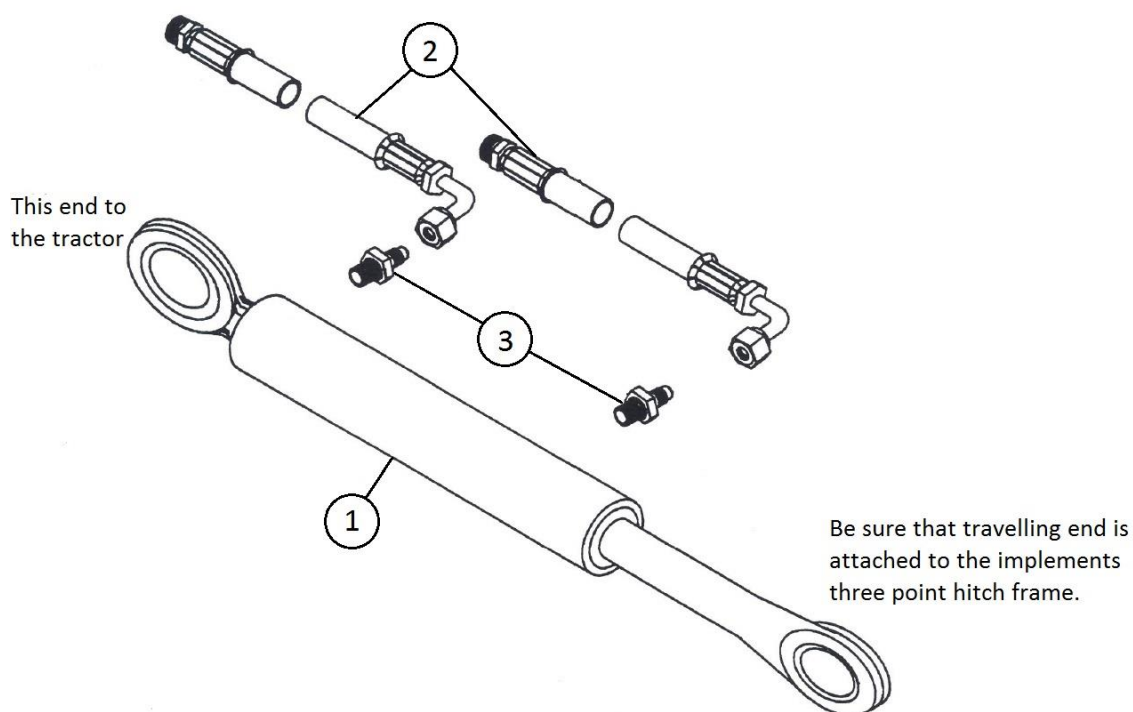
### GORDON BANNERMAN LIMITED

41 Kelfield Street, Rexdale, ON M9W 5A3 Canada

T: (416) 247-7875 F: (416) 247-6540

[www.sportsturfmagic.com](http://www.sportsturfmagic.com)

## Hydraulic Top Link Kit



Hydraulic Top Link			
#	Part #	Description	Qty
1	15150	Hydraulic Cylinder	1
2	15151	Hydraulic Hose 60" Length	2
3	15152	1/4" NPT Fitting	2

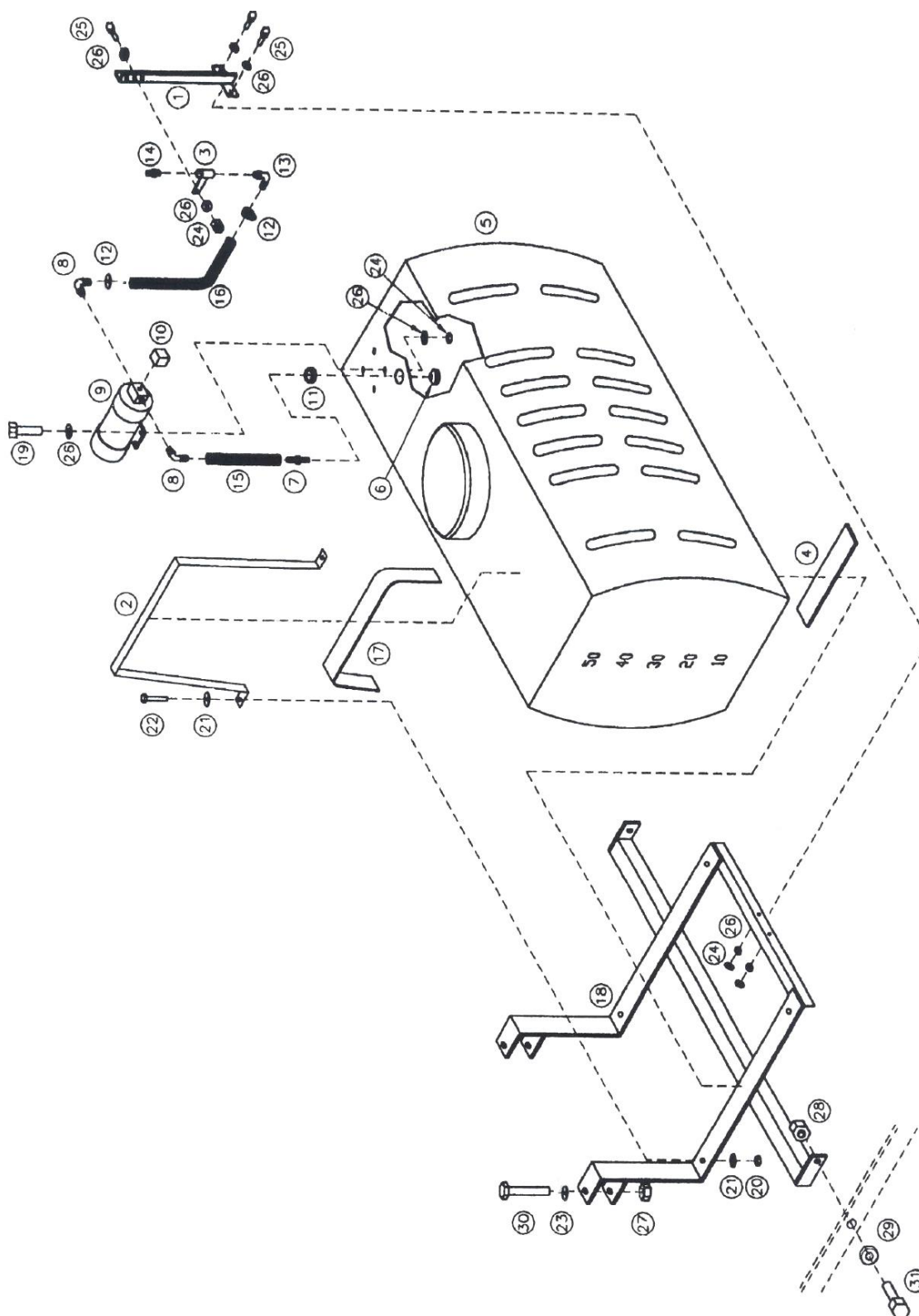
### GORDON BANNERMAN LIMITED

41 Kelfield Street, Rexdale, ON M9W 5A3 Canada

T: (416) 247-7875 F: (416) 247-6540

[www.sportsturfmagic.com](http://www.sportsturfmagic.com)

# Water Tank Kit



## GORDON BANNERMAN LIMITED

41 Kelfield Street, Rexdale, ON M9W 5A3 Canada

T: (416) 247-7875 F: (416) 247-6540

[www.sportsturfmagic.com](http://www.sportsturfmagic.com)

<b>Water Tank Kit</b>			
<b>#</b>	<b>Part #</b>	<b>Description</b>	<b>Qty</b>
1	15201	Nozzle Mounting Bracket	1
2	15202	Tank Strap	2
3	15203	Nozzle Coupling Bracket	1
4	15204	Rubber Pad - Tank Mounting	2
5	15205	Water Tank	1
6	15206	Filter Screen	1
7	15207	Adapter Barb	1
8	15208	90 Degree Elbow 3/8" MPT x 1/2"	2
9	15209	12 Volt Pump	1
10	15210	Pressure Switch	1
11	15211	Grommet	1
12	15212	Clamp	2
13	15213	90 Degree Elbow 1/2" x 1/2"	1
14	15214	Nozzle 4.0 Gallons per Minute	1
15	15215	Hose 1/2" x 24"	1
16	15216	Hose 1/2" x 40"	1
17	15217	Rubber Pad - Strap	2
18	15200	Frame - Water Tank B-BP-6	1
19	01019	1/4"-20 x 1-1/2" Hex Head Cap Screw	4
20	02004	5/16"-18 Nut, Nylon Insert	4
21	02005	5/16" Washer, Flat	8
22	02007	5/16"-18 x 2-1/4" Hex Head Cap Screw	4
23	02024	3/8" Washer, Flat	2
24	02066	1/4"-20 Nut, Nylon Insert	3
25	03004	1/4"-20 x 1" Hex Head Cap Screw	3
26	03007	1/4" - Washer, Flat	10
27	03022	3/8"-16 Nut, Nylon Insert	2
28	03024	1/2"-13 Nut, Nylon Insert	2
29	03032	1/2" Washer, Flat	2
30	11211	3/8"-16 x 3" Hex Head Cap Screw	2
31	11225	1/2"-13 x 1-3/4" Hex Head Cap Screw	2

**GORDON BANNERMAN LIMITED**

41 Kelfield Street, Rexdale, ON M9W 5A3 Canada

T: (416) 247-7875 F: (416) 247-6540

www.sportsturfmagic.com



A Division of Gordon Bannerman Limited

*"The Home of Sportsturf Magic"*

Scan the QR code below to visit our website



Or visit [www.sportsturfmagic.com](http://www.sportsturfmagic.com)

For any Questions, Customer Support or General Inquiries, please email [info@sportsturfmagic.com](mailto:info@sportsturfmagic.com)

**GORDON BANNERMAN LIMITED**

41 Kelfield Street, Rexdale, ON M9W 5A3 Canada

T: (416) 247-7875 F: (416) 247-6540

[www.sportsturfmagic.com](http://www.sportsturfmagic.com)